



925

User Manual

Version 1.0



● Product Story



Balanced Luxury

The InWin 925 is built like a tank while maintaining the class of a luxury car. The “little” brother of the popular 928 super tower debuts in full tower form. The quality materials fused together to create a case with optimal airflow, unique aesthetics and an internal configuration for superior PCs.



Specifications

Model	925
Model Number	IW-CS-925BLK
Colors	Black
Case Type	Full Tower
Material	Aluminium, SECC, ABS ,Tempered Glass
M/B Compatibility	12" x 13" E-ATX, ATX, Micro-ATX, Mini-ITX
Expansion Slots	PCI-E x 8
	Vertical PCI-E x 2
Maximum Compatibility	VGA Card Length: 420mm (Maximum) CPU Heatsink Height: 200mm
I/O Ports	1 x USB 3.1 Gen 2 Type-C
	2 x USB 3.0
	HD Audio
Internal Drive Bays	4 x 3.5"
	3 x 2.5"
Thermal Solution	Air Cooling:
Compatibility	3 x 120mm / 2 x 140mm Front Fans
	3 x 120mm Top Fans
	3 x 120mm Rear Fans
	Water Cooling:
	240mm / 280mm Front Radiator
	(Supports up to 360mm radiator when the two HDD cages removed)
Power Supply Compatibility	360mm Top Radiator
	PSII: ATX12V
Product Dimensions (H x W x D)	Length: 140 – 200mm
	570 x 280 x 608mm
Package Dimensions (H x W x D)	22.4" x 11" x 26.7"
	652 x 392 x 695mm
Net Weight	25.6" x 15.4" x 27.3"
	17.8 kg , 39lb
Gross Weight	21 kg , 46lb

* Our products comply with RoHS regulations

* Specifications may vary based on different regions

● Package Contents

1. 925 Chassis



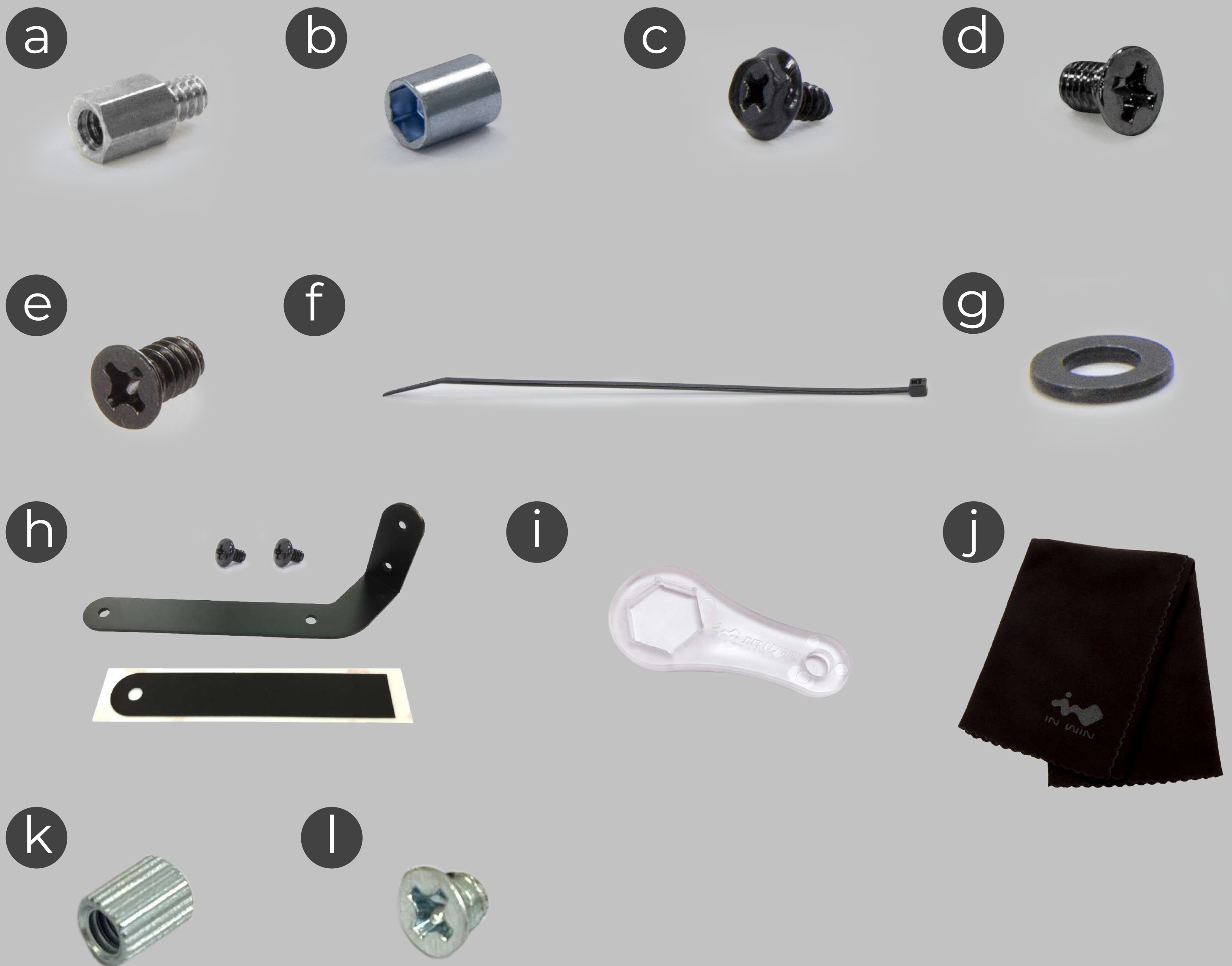
2. QR Code Card



3. Accessories Bag



○ Accessories Bag



- a. Motherboard Stand-offs x16
- b. Motherboard Stand-off Socket x1
- c. Hexagon Head Screws x24
- d. 2.5" SSD Screws x12
- e. 3.5" HDD Screws x12
- f. Cable Ties x10
- g. Water Cooling System Washers x24
- h. Graphics Card Holders x2
- i. Hexagon Wrench x1
- j. Wiping Cloth x1
- k. Motherboard Support Stand-offs x2
- l. Motherboard Support Screws x 2

● Case Structure



1. I/O Panel
2. Tempered Glass Side Panels
3. Aluminium Curved Front Panel
4. Aluminium Curved Back Panel
5. Wire Routing Holes



● Case Structure

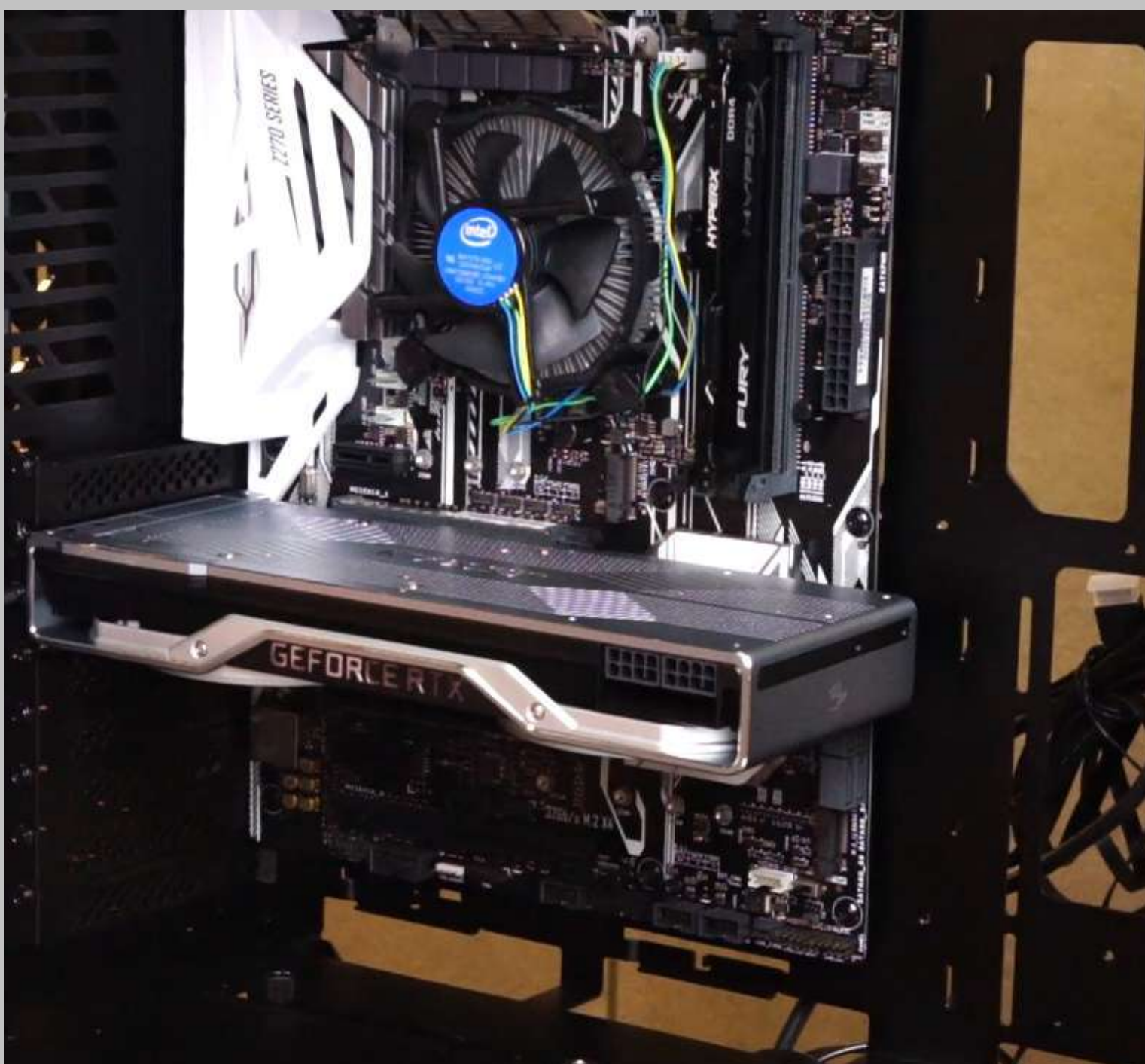


- 1. 3.5" Drive Bay
- 2. 2.5" Drive Bay
- 3. Power Supply Mounting Area
- 4. Top Fan/ Radiator Mounting Area
- 5. Rear Fans
- 6. Front Fans/ Radiator Mounting Area
- 7. Motherboard Mounting Area
- 8. CPU Cooler Installation Cut-Out Hole
- 9. PCI-E Expansion Slot
- 10. Vertical PCI-E Expansion Slot
- 11. Extra PCI-E Supporting Mounting Hole
- 12. Fan Dust Filter
- 13. Shock-Proof Stand

○ Installation Guide

For more assembly instructions, please scan the QR Code below or watch the video on the website link:

<https://youtu.be/ePccypG9ELM>



● Notices and Warranty

■ Notices

1. Please follow the user manual for installation guidelines.
2. When installing the computer components, please use antistatic precautions to prevent ESD (electrostatic discharge) damage. Failure to take the necessary precautions may result in injury to the installer and/or damage to the machine. Incorrect installation may burnout the motherboard and other system components.
3. To avoid any damages, please do not use this product for any other purpose than its intended use.
4. Any modifications may damage the product and will void the warranty.
5. Please remove all internal devices before shipping or moving. (Including power supply, hard drives, motherboard, CPU, etc.)
6. Please avoid unnecessary insertions and extractions to the addressable cable as it may damage the pins.
7. To avoid damaging any circuits, please make sure the power is off before assembling any internal device.
8. When the side panels are opened, please do not put your hands or other objects into the fans or other parts in operation. And please make sure to keep away from children and pets.

■ Warranty

- * For more detailed warranty information, please visit the InWin retail website at www.in-win.com.
- * The actual product is subject to change without prior notice. In Win Development Inc. reserves the right to make final modifications.



CONTEMPORARY & INNOVATIVE
www.in-win.com

Copyright © 2019 InWin Development Inc. All Rights Reserved.