

# BK SERIES mATX CHASSIS

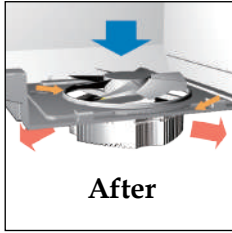
12.5L SMALL FORM FACTOR

## BK Series uses Intel Mt. Jade as Ref. Design

This Partition Plate Cooling Technology is the world's first advanced thermal & acoustic technology co-designed by In Win & Intel.

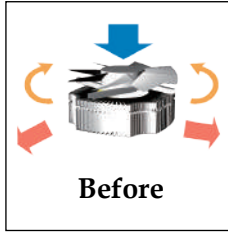


3rd Generation PPCT



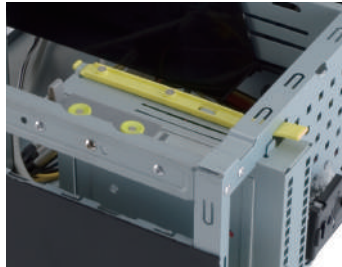
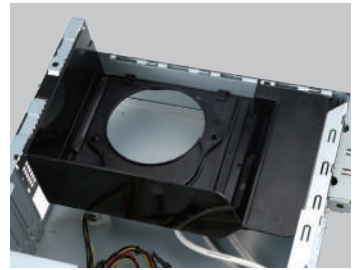
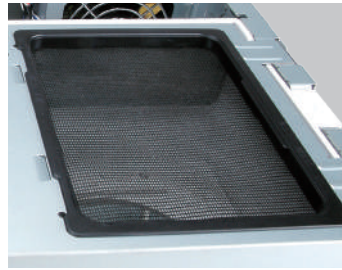
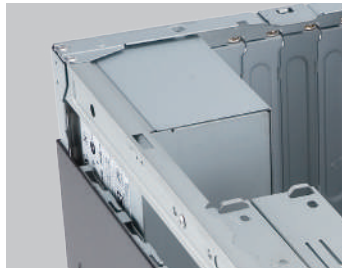
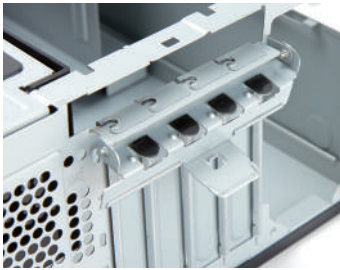
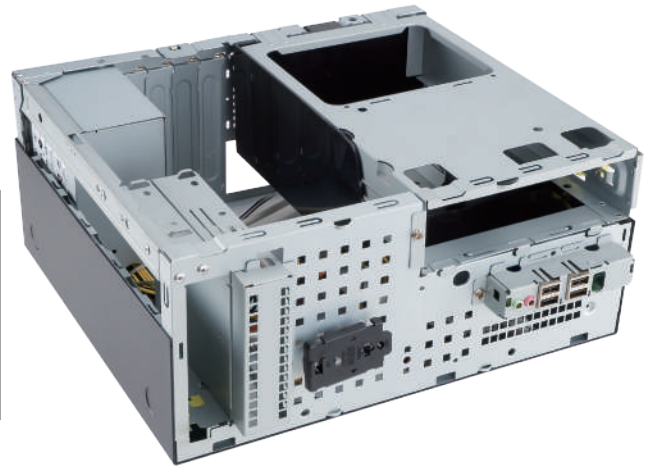
After

Using Partition Plate Cooling Tech



Before

Previous Design



## Features

### Design Philosophy

To design a small 12.5L S.F.F chassis with better thermal & acoustic performance than other bigger size chassis.

### Easy Integration

Compatible with all standard desktop components. Easy system integration.

### Flexible Compatibility

Small but flexible enough to accommodate four full height PCI cards.

### 3rd Generation of Partition Plate Cooling Technology (PPCT)

PPCT is the world's first advanced thermal and acoustic cooling technology, which provides S.F.F. chassis with excellent thermal solutions while creating a quieter computing experience. PPCT does not require second fan; yet still provides an excellent thermal solution. The 3rd generation of PPCT includes an adjustable air duct for various CPU fans and efficiently eliminates overheat while enhances airflow of entire system. The new PPCT also supports the LGA 1155 socket.

### Tool-Free

Optional tool-free designs - ODD/FDD/HDD bays and side panel.

# BK SERIES

## mATX CHASSIS

12.5L SMALL FORM FACTOR



**BK623** ■ ■

## Specifications

<b>Case Size</b>	S.F.F. Tiny Tower Chassis
<b>External Drive Bays</b>	5.25" x 1, 3.5" x 1
<b>Internal Drive Bays</b>	3.5" x 1 or 2.5" x 1
<b>Front Ports</b>	USB 2.0 x 4, HD Audio
<b>Dimensions (HxWxD)</b>	323 x 140 x 276mm (12.5L)
<b>w/o Front Panel</b>	12.7" x 5.5" x 10.8"
<b>MB Form Factor</b>	Micro-ATX
<b>I/O Expansion Slots</b>	Full Height Slot x 4
<b>Power Supply</b>	SFX 12V Form Factor, 300W
<b>Thermal Solution</b>	<ul style="list-style-type: none"> <li>• Intel Mt. Jade Ref. Design</li> <li>• New Partition Plate Cooling Technology (New PPCT)</li> <li>• No Second Fan (Rear Fan) Needed</li> </ul>
<b>Safety</b>	Meets RoHS, CE and FCC Class B Requirements
<b>Security</b>	Padlock Loop / Kensington Slot
<b>Optional</b>	<ul style="list-style-type: none"> <li>• IEEE 1394</li> <li>• IR</li> <li>• Removable Air Filter</li> <li>• Chassis Intrusion Switch</li> <li>• Tool-Free ODD/FDD/HDD Bay Clips</li> <li>• Tool-Free Side Panel Clips</li> <li>• Screwless Expansion Slots Clip</li> <li>• USB 3.0 x 2</li> <li>• 3.5" to 2.5" HDD/SSD Bracket</li> <li>• Key Lock Side Panel</li> </ul>

\* The actual product is subject to change without prior notice. In Win Development Inc. reserves the right to make final modifications.