

315

Mid Tower

User Manual





315 Product Video

315

Product Story

A Real Class Act

315 is a sleek and highly expandable Mid Tower chassis, characterized by a modern aesthetic design that perfectly integrates aluminium and glass. This high-class combination of style and expandability proves yet again InWin's fine craftsmanship and relentless innovation.



Specifications

315

Model	315
Model Number	IW-CS-315BLK-1AL120
Colors	Black
Case Type	Mid Tower
Materials	Aluminium, SECC, Tempered Glass
Materials M/B Compatibility	12” x 13” (305 x 330 mm) E-ATX, ATX, Micro-ATX, Mini-ITX
Expansion Slots	7 x PCI-E
Maximum Compatibility	VGA Card Length: 350 mm CPU Heatsink Height: 160 mm
I/O Ports	1 x USB 3.2 Gen 2x2 Type-C 2 x USB 3.0 HD Audio
Internal Drive Bays	2 x 3.5” / 2.5” 2 x 2.5"
Thermal Solution Compatibility	Air Cooling Fans: Top: 3 x 120 mm Rear: 1 x 120 mm Bottom: 3 x 120 mm (1 InWin Luna AL120 Fan Included) Water Cooling Radiator: Top: 1 x 360 mm Rear: 1 x 120 mm Bottom: 1 x 360 mm (Slim)
Power Supply Compatibility	PSII: ATX12V - Length up to 200 mm
Product Dimensions (L x W x H)	494 x 225 x 505 mm 19.5 x 8.8 x 18.9"
Package Dimensions (L x W x H)	572 x 610 x 335 mm 22.5 x 24 x 13.1"
Net Weight	12.3 kg
Gross Weight	14.6 kg

* Number of fans pre-installed may vary based on different regions.

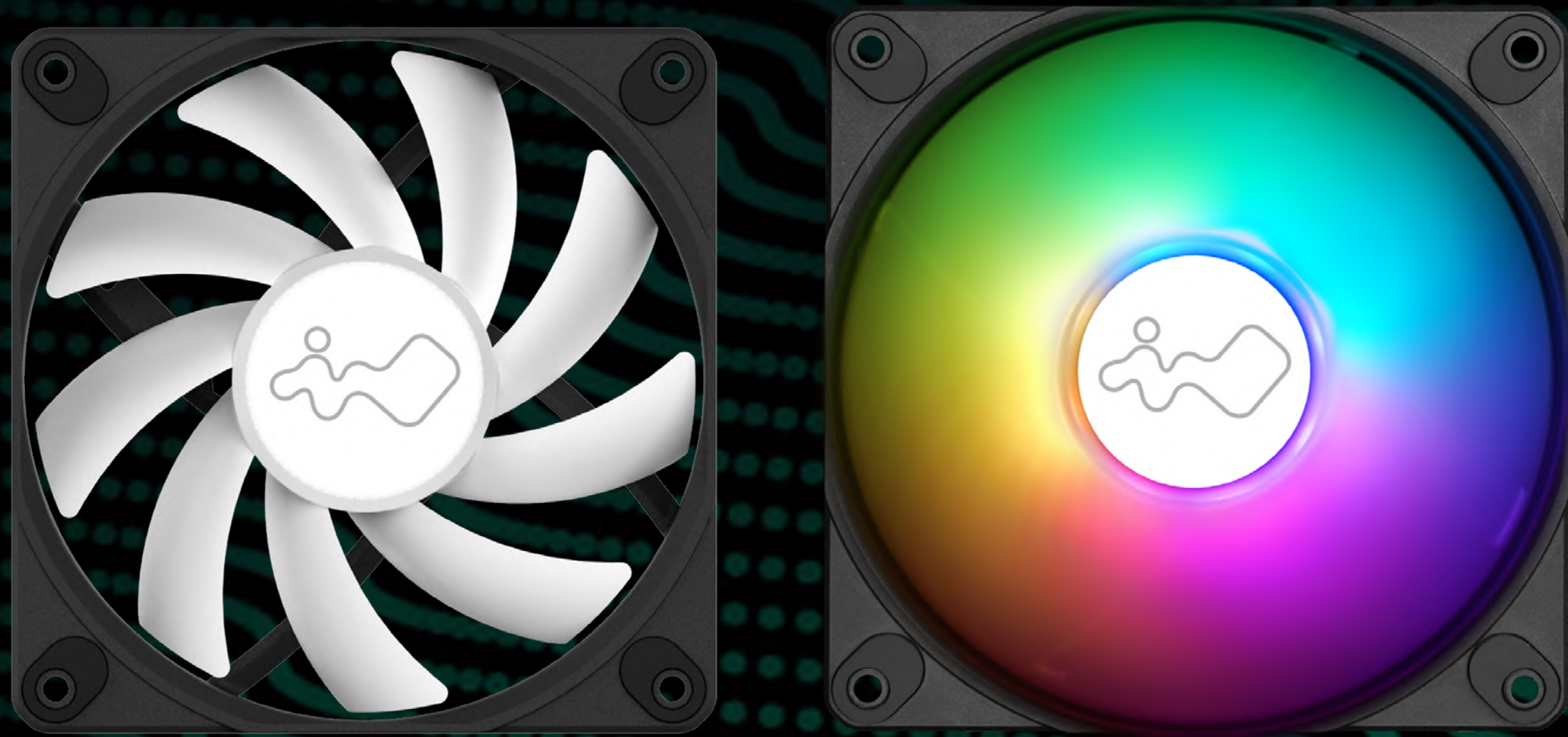
* InWin's products comply with RoHS regulation.

Specifications

InWin Luna AL120 Fan

Model	Luna AL120
Colors	Black
Fan Size	120 x 120 x 25 mm
Materials	PC, PBT
Rated Voltage	DC 12V
Rated Power	3.96W
Rated Current	0.33A
ADD RGB Rated Voltage	DC 5V
ADD RGB Rated Power	1.5W
ADD RGB Rated Current	0.3A
Speed Mode	PWM 600-1800 +/-10% RPM
Air Flow	82.96 CFM
Air Pressure	2.31 mm / H2O
LED	Addressable RGB
Connector (Fan to Fan)	Non-Modular Cables
Connector to M/B	4-Pin (PWM, 12V), 3-Pin (ARGB, 5V)
Noise Level	25 dB(A) (Normal)
Bearing Type	Long Lifespan Sleeve Bearing

* InWin's products comply with RoHS regulations.
* Specifications may vary based on different regions.



Package Contents

1) 315 Chassis x 1



2) QR Code Card x 1



3) Luna AL120 Fan x 1



4) Graphics Card Anti-Sag Support x 1



5) Accessories Bag x 1

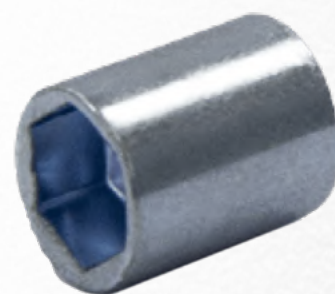


a. 2.5" HDD Screws



x 18

e. Motherboard Stand-off Socket



x 1

b. 3.5" HDD Screws



x 10

f. Washer



x 8

c. Hexagon Head Screws



x 18

g. Cable Ties



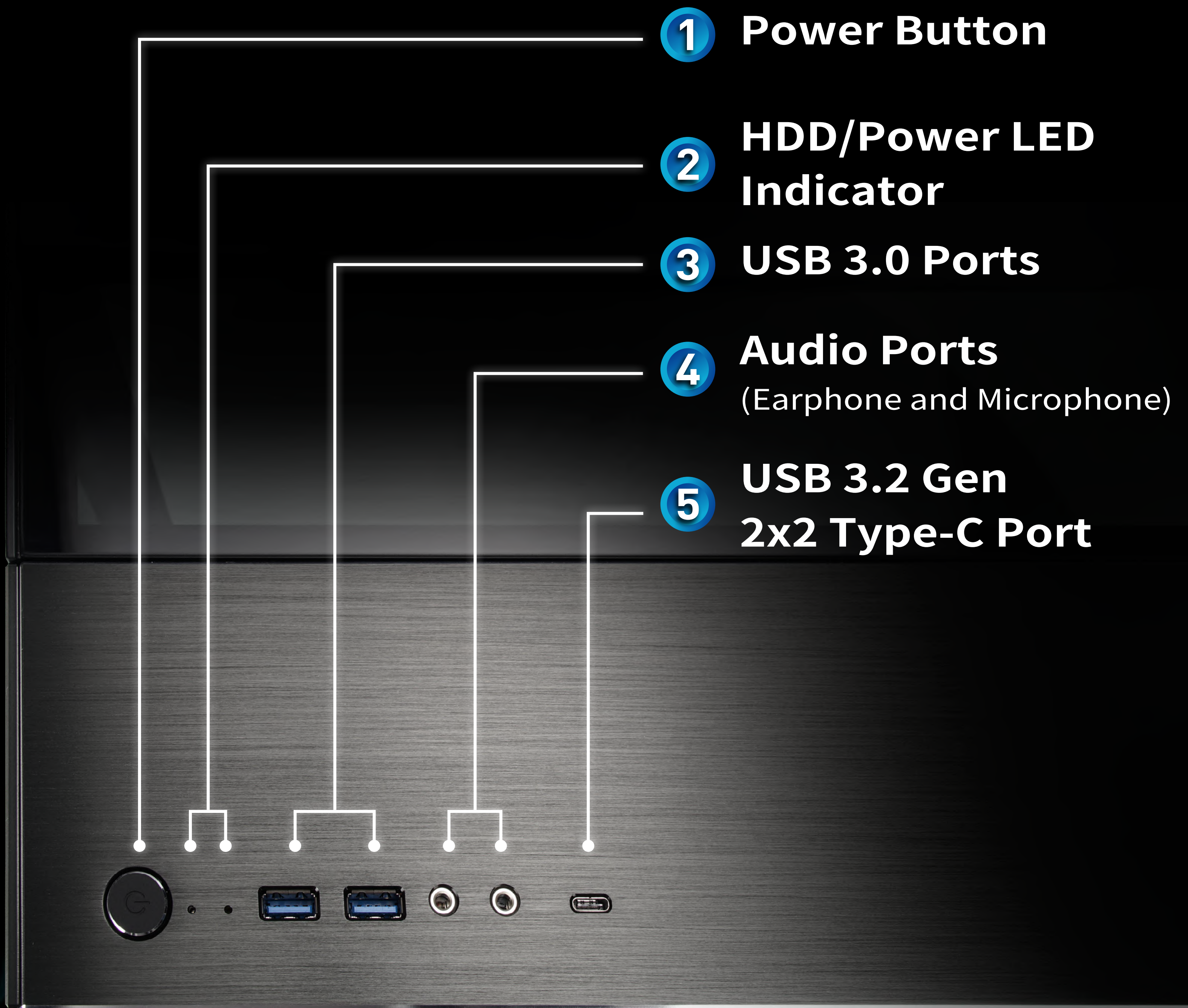
x 10

d. Motherboard Stand-Offs



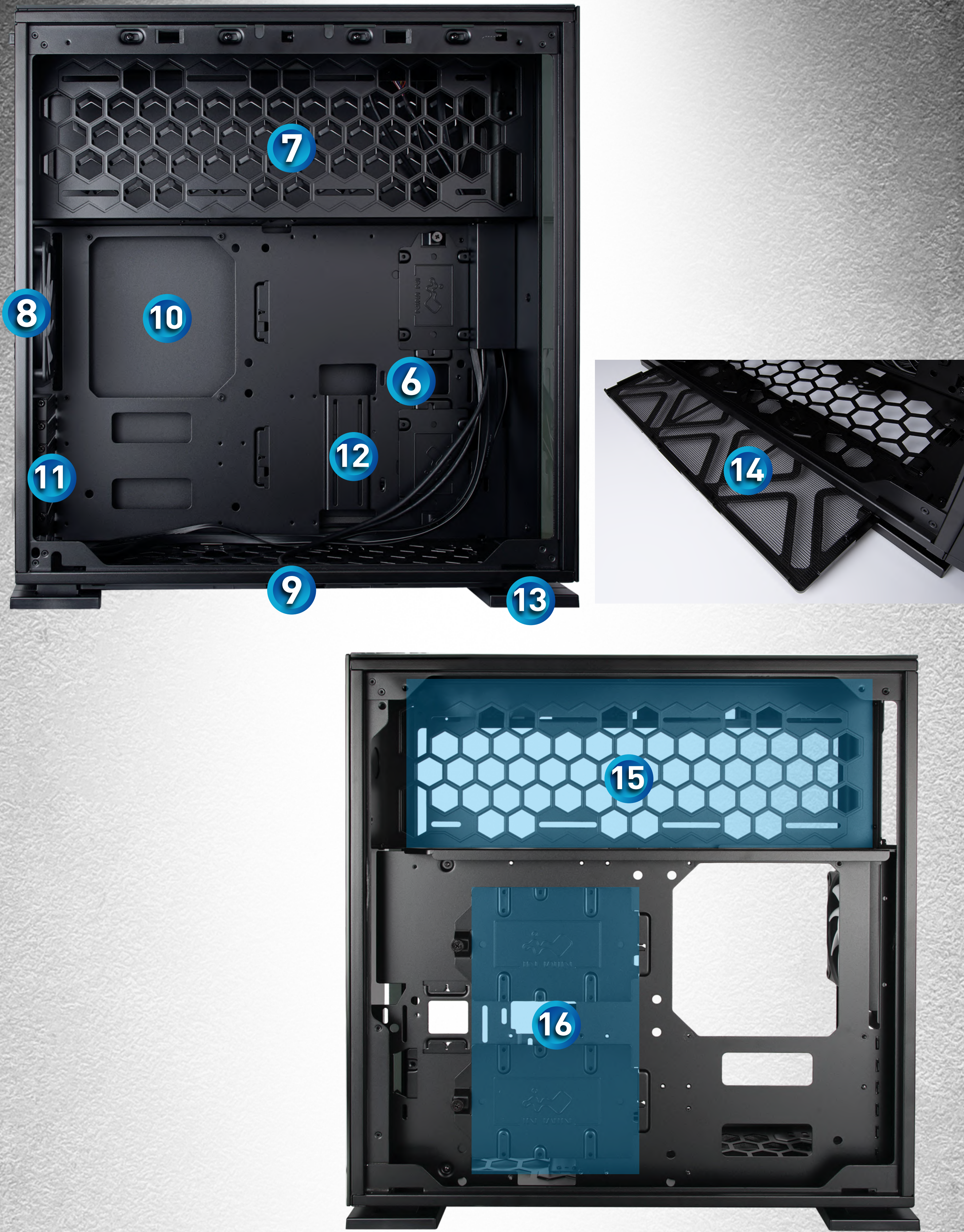
x 11

Case Structure



315

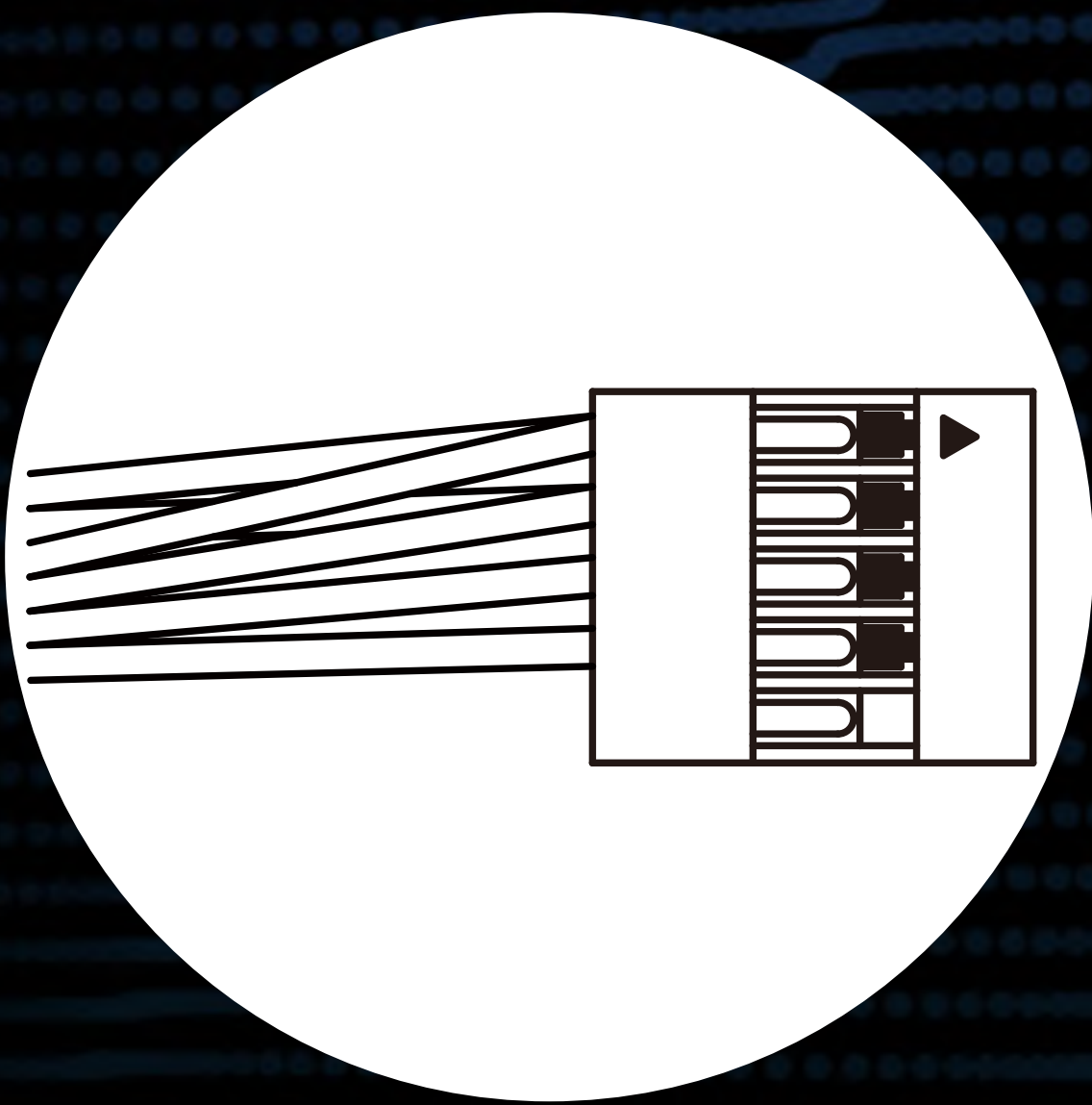
Case Structure



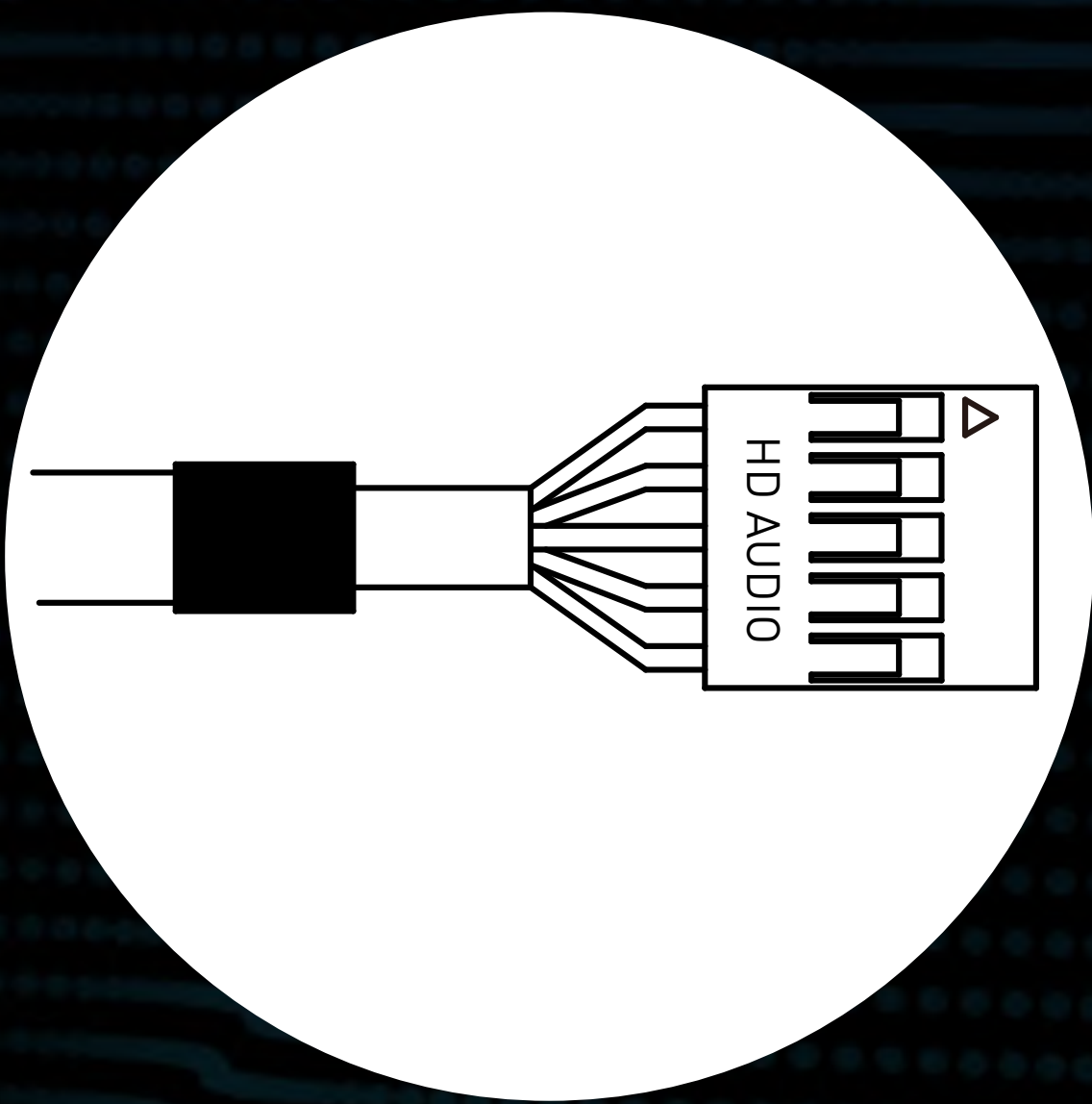
6	2.5" Drive Bays
7	Top Fan / Radiator Mounting Area
8	Rear Fan / Radiator Mounting Area (1 InWin Luna AL120 Fan Pre-Installed)
9	Bottom Fan / Radiator Mounting Area

10	Motherboard Mounting Area
11	PCI-E Expansion Slots
12	Extra PCI-E Supporting Mounting Hole
13	Shock-Proof Stands
14	Fan Dust Filter
15	Power Supply Mounting Area
16	3.5" / 2.5" Drive Bays

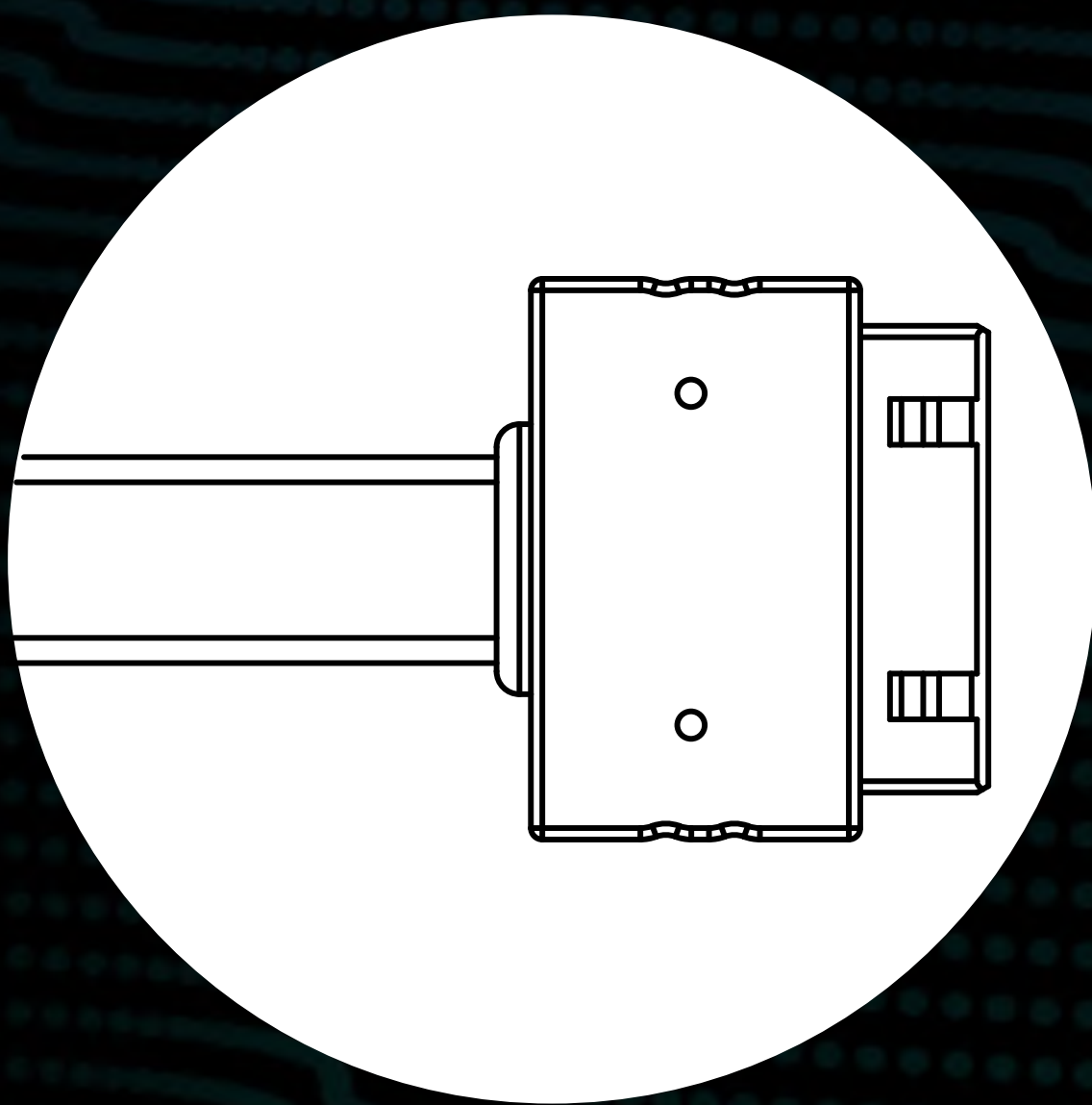
Cable Information



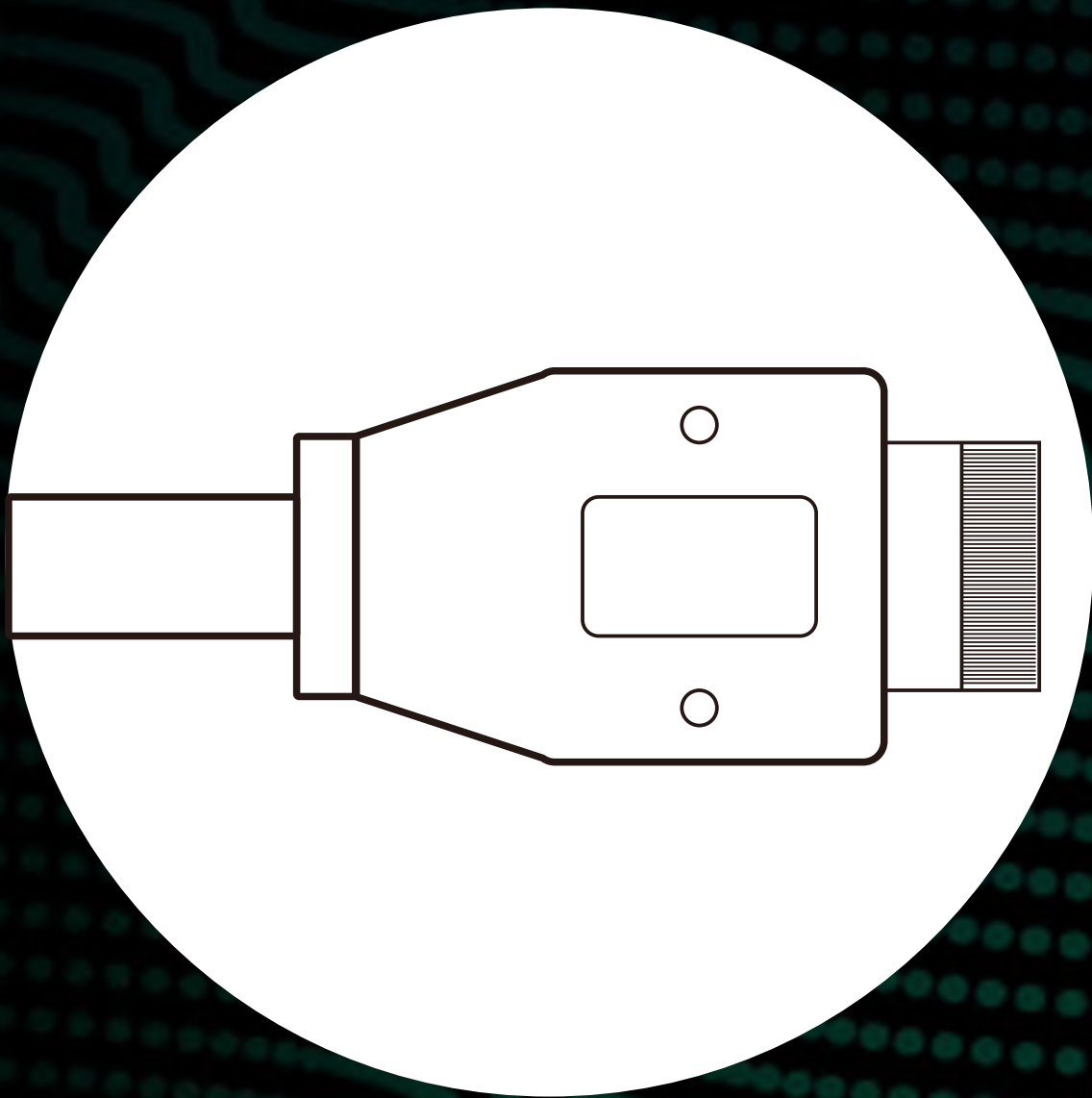
Switch/LED **x1**



HD Audio **x1**



USB3.0 **x1**



USB 3.2
Gen 2x2 Type-C **x1**

Installation Guide

- * Please follow the related chapters to assemble.
- * Please use original provided accessories to avoid damage to the product.

(1) Opening the Chassis

Press the Quick-Release Button to remove the tempered glass side panel.

Caution: Be aware of possible sudden releases of the glass panel when opening it. You can also use this feature as a locker. Keep hardware safe by adding a lock.



(2) Power Supply Installation

Power Supply can be mounted to the top bracket.

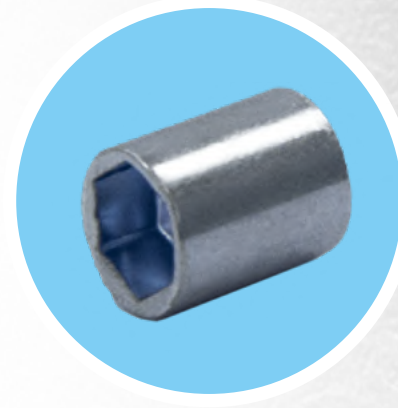
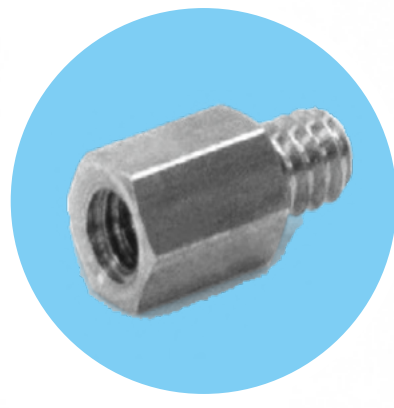


Parts Required: Hexagon Head Screws



Installation Guide

(3) Motherboard Installation

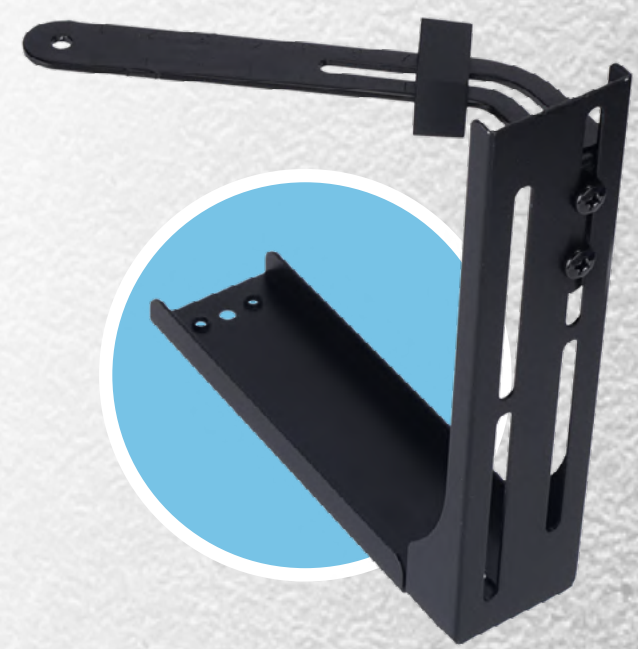


Parts Required: Motherboard Stand-Offs, Motherboard Stand-Off Socket, Hexagon Head Screws

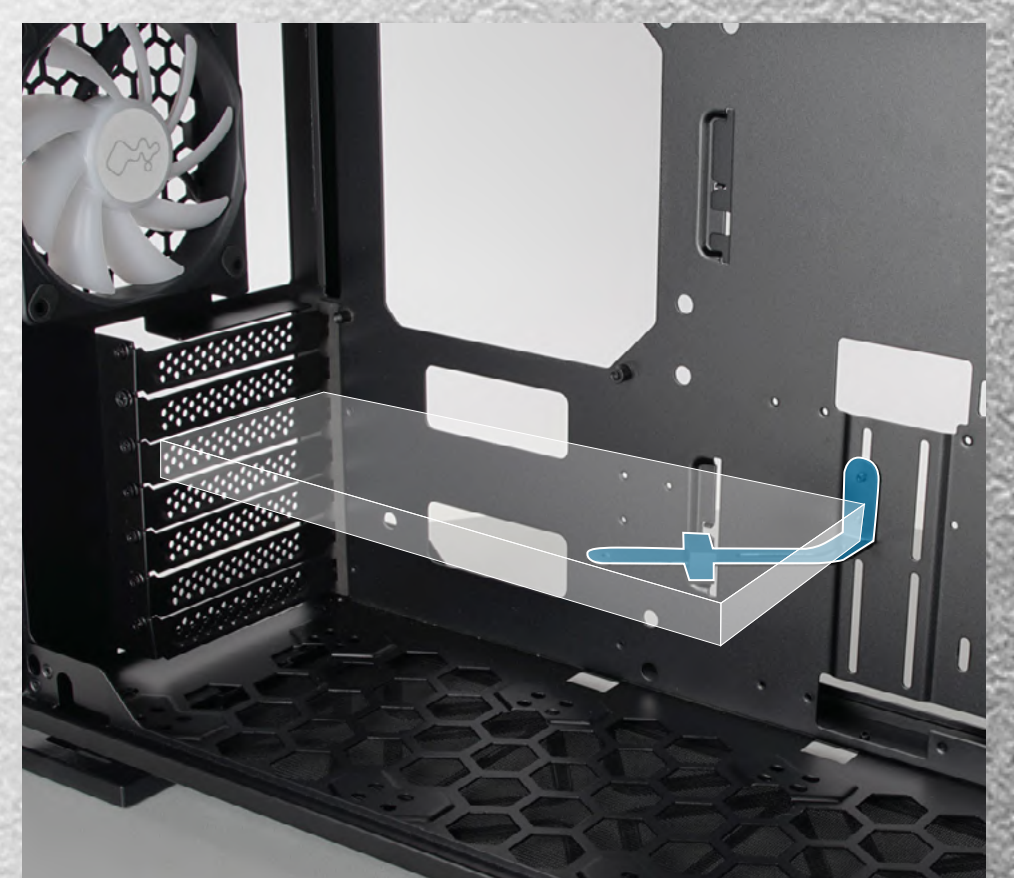
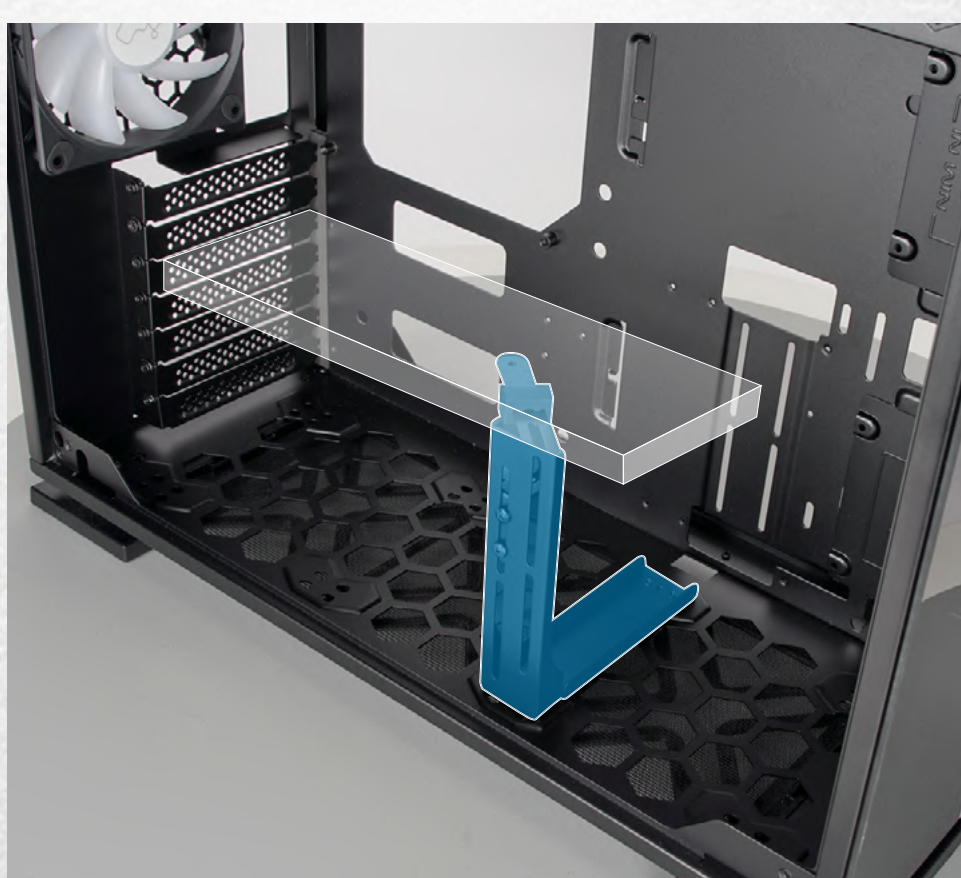
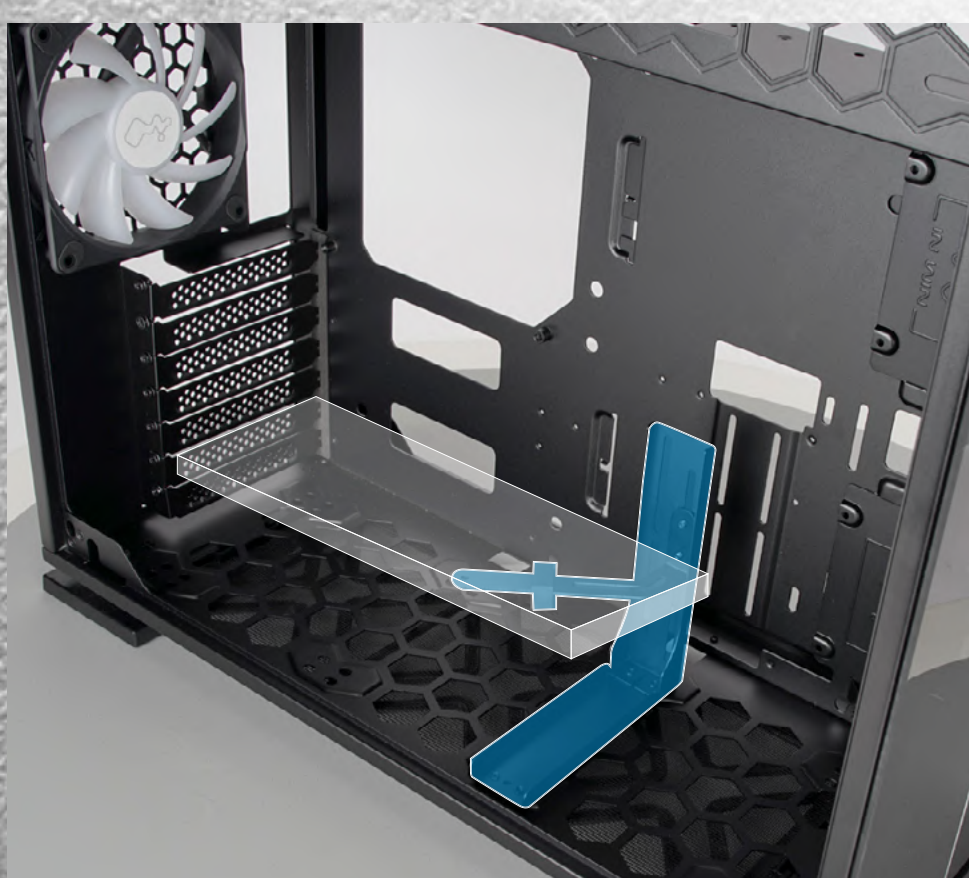


(4) Expansion Card Installation

- * There are multiple ways to install the GPU Anti-Sag Support.
- * Please consider that the installation of the bracket may affect the placement of the bottom fans/radiator and other components of your build.
- * Use the adjustable GPU Anti-Sag Rubber Pad to eliminate friction between your Expansion Card and the bracket.



Parts required: Hexagon Head Screws, GPU Anti-Sag Support

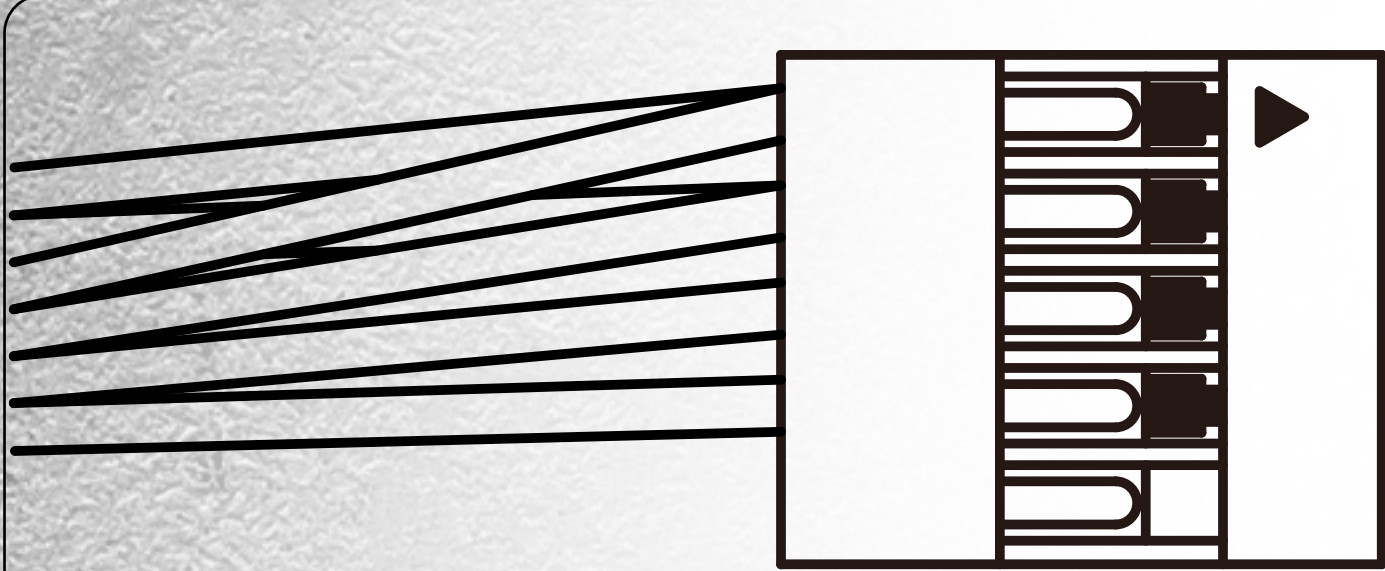


Installation Guide

(5) I/O Wires Installation

Switch/LED Connector

Blue (P_LED)	1	2	Red (HDD)
White (P_LED)	3	4	White (HDD)
Brown (P_SW)	5	6	NC
White (P_SW)	7	8	NC
Key	9	10	NC



Blue(P_LED)	1	2	Red (HDD)
White(P_LED)	3	4	White (HDD)
Brown(P_SW)	5	6	NC
White(P_SW)	7	8	NC
Key	9	10	NC

HD Audio Header

PORT2_L	BLUE	10	9	BROWN	SENSE2_R
SENSE_SEND	PURPLE	8	7	KEY	
PORT2_R	YELLOW	6	5	WHITE	SNAS1_R
PORT1_R	RED	4	3	ORANGE	PRESENCE#
PORT1_L	GREEN	2	1	BLACK	GND

USB3.0 Header

PIN#1

PIN#19

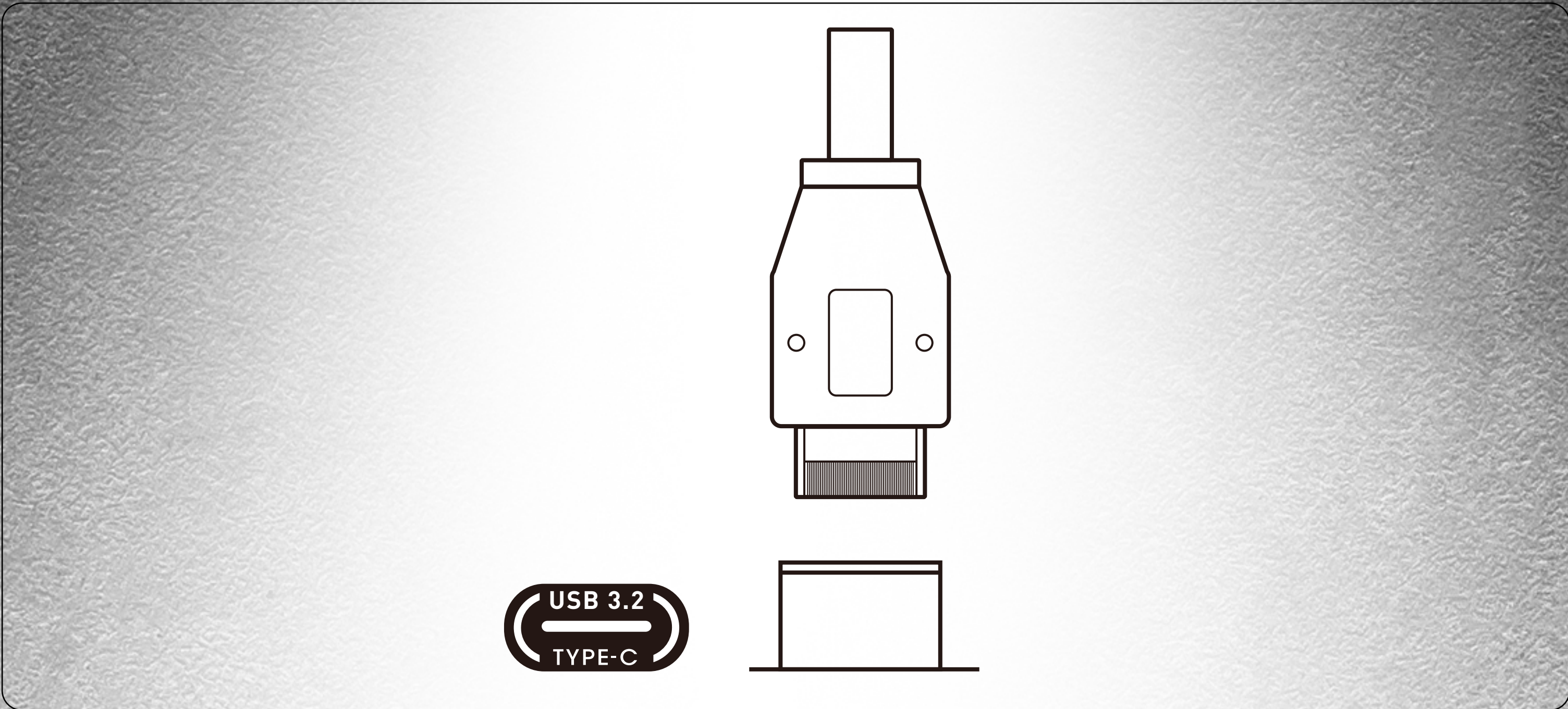
Vbus	1		19	Vbus
IntA_P1_SSRX-	2		18	IntA_P2_SSRX-
IntA_P2_SSRX+	3		17	IntA_P2_SSRX+
GND	4		16	GND
IntA_P1_SSTX-	5		15	IntA_P2_SSTX-
IntA_P1_SSTX+	6		14	IntA_P2_SSTX+
GND	7		13	GND
IntA_P1_D-	8		12	IntA_P2_D-
IntA_P1_D+	9		11	IntA_P2_D+
ID USBOC-	10			

PIN#10

PIN#11

Installation Guide

Type-C Cable



(6) 2.5" Drive Bays Installation



Parts required: 2.5” HDD Screws

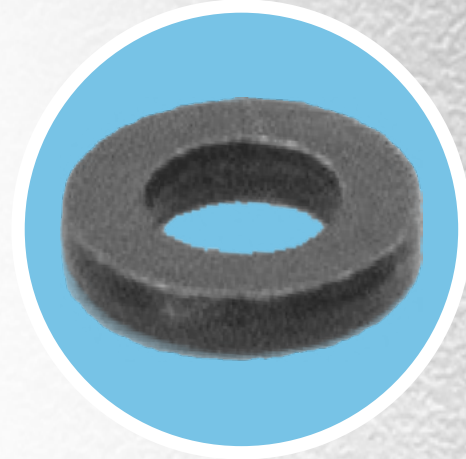
(7) 3.5" Drive Bays Installation



Parts required: 3.5” HDD Screws

Installation Guide

(8) Fan / Liquid Cooling Radiator Installation

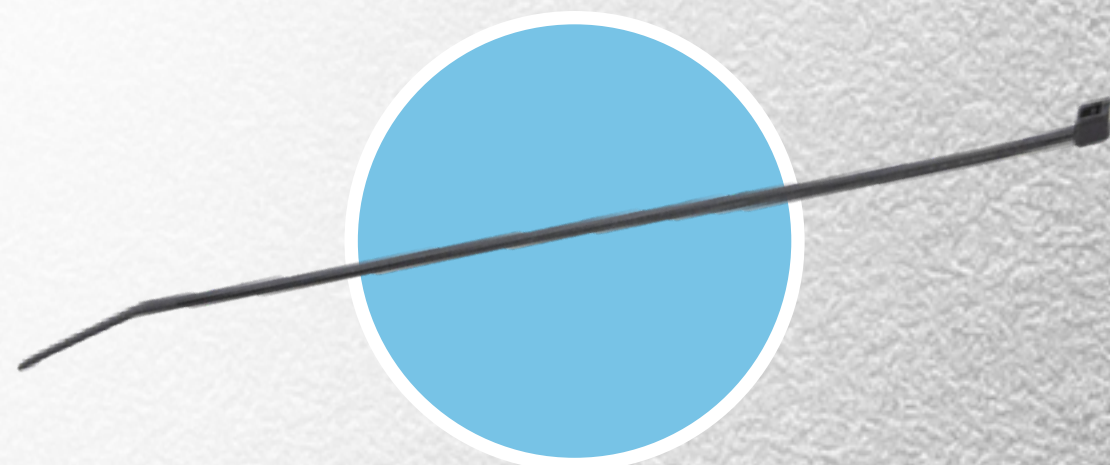


Parts required: Water-cooling System Washers

Optimal Airflow Setup:



(9) Completing Installation



Parts required: Cable Ties

Notices and Warranty

■ Notices

1. Install in accordance with the user manual's instructions and safety warnings. Incorrect installation may result in burning out the motherboard and other system components.
2. To avoid damaging any circuits, please make sure the power is off before assembling any internal device.
3. When installing the computer components, please use the antistatic precautions to prevent ESD (electrostatic discharge) damage. This can cause injury to the installer and/or damage to the machine.
4. When the side panels are opened, please do not put your hands or other objects into the fans or other parts in operation. And please make sure to keep away from children and pets.
5. Please avoid unnecessary insertions and extractions to the addressable cable as it may damage the pins.
6. To avoid any damages, please do not use this product for any other purpose than its intended use.
7. Any modifications may damage the product.
8. Please remove all internal devices before shipping or moving. (Including power supply, hard drives, motherboard, CPU, etc)
9. Keep this product away from areas with high temperatures such as: heat dissipation machines, air conditioners or other machines which may generate high temperatures.
10. Please use only this product's exclusively supplied cables. Other cables may not be compatible and could cause serious damage to your system and power supply.

■ Warranty

1. For more detailed warranty information, please visit the InWin retail website at www.in-win.com.
2. The actual product is subject to change without prior notice. In Win Development Inc. reserves the right to make any final modifications.



InWin

CONTEMPORARY & INNOVATIVE

www.in-win.com

