

ALICE

User Manual

Version 1.0



■ Product Story

Adventures in PC Land !

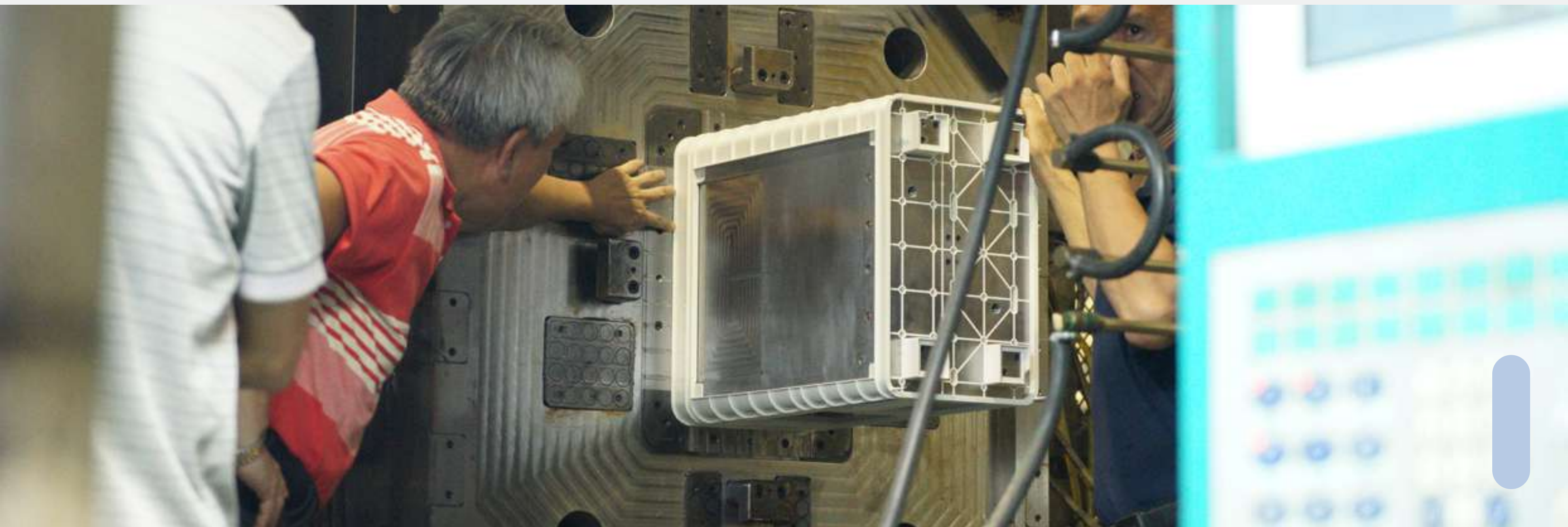
Gathering inspiration from the classic tale of Alice in Wonderland, we're taking PC builders on a journey where imagination reigns supreme! Alice reps any adventure! Alice's light weight frame is paired with a unique cover. A variety of cover options are available to best pair with your setup.



■ Specifications

Model	Alice
Part Number	IW-ALICE-GRY IW-ALICE-ORG
Color (Chassis / Top Cover)	Cool Grey / Dark Grey Cool Grey / Orange
Case Type	Mid Tower
Material	ABS, SECC
Standard Cover	Color : InWin monogram Material : 100% Polyester
M/B Compatibility	12" x 11" ATX, Micro-ATX, Mini-ITX
Expansion Slots	PCI-E x 8
Maximum Compatibility	VGA Card Length: 300mm CPU Heatsink Height: 195mm
Internal Drive Bays	3 x 2.5" 1 x 3.5"
Thermal Solution	1 x 120 Top Fan / 120mm Radiator
Compatibility	3 x 120 Bottom Fan / 360mm Radiator
Power Supply Compatibility	PSII : ATX12V - Length up to 220mm
Product Dimensions (H x W x D)	584 x 282 x 433 mm 22.99" x 11.1" x 17.05"
Package Dimensions (H x W x D)	628 x 294 x 445mm 24.7" x 11.6" x 17.5"
Net Weight	3.7 kg / 8.16 lbs
Gross Weight	5 kg / 11.02 lbs

- * Our products comply with RoHS regulations
- * Specifications may vary based on different regions

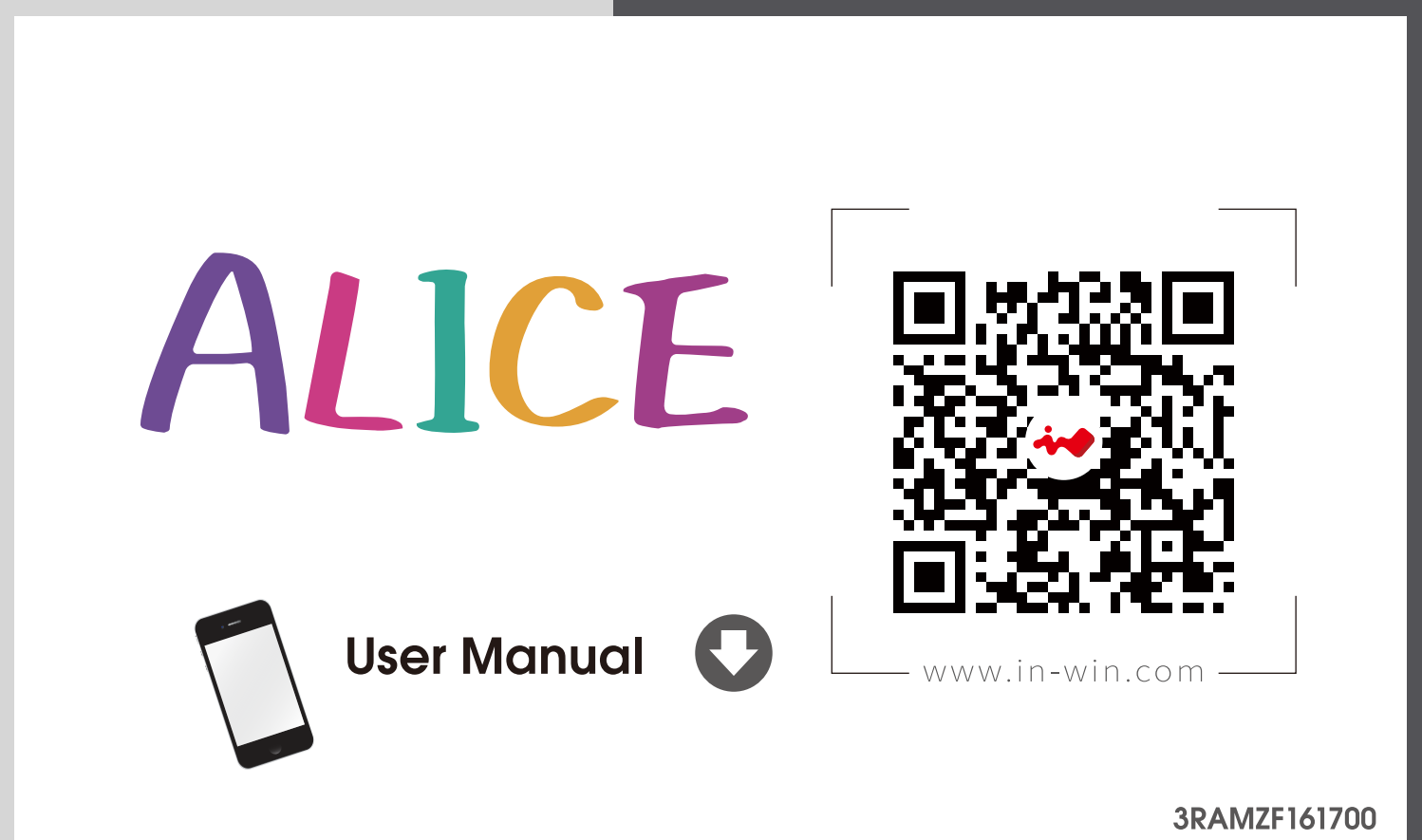


Package Contents

1. Alice Chassis



2. QR Code Card



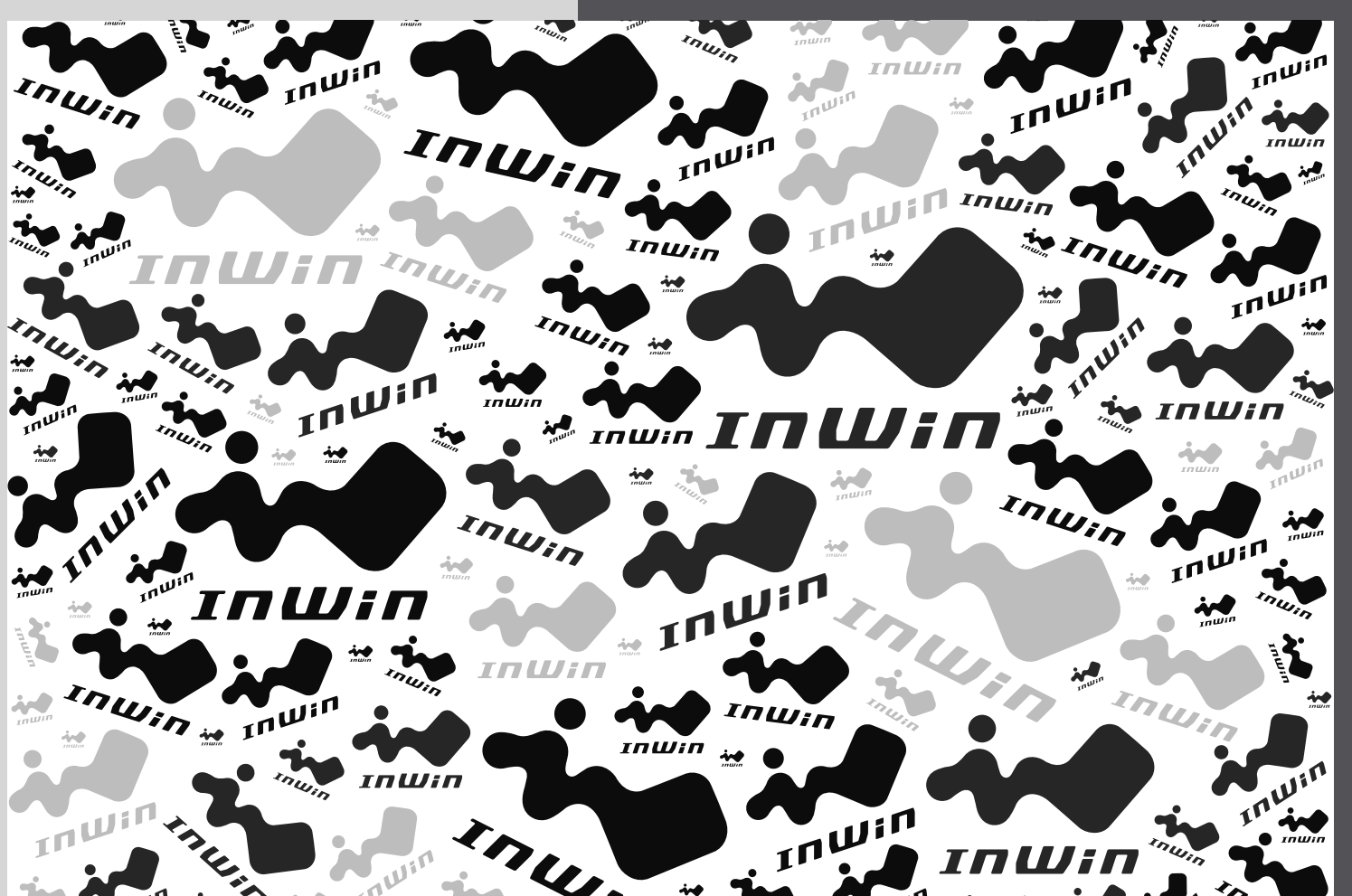
3. Accessories Bag



4. Alice Cover

Standard Color :
InWin monogram

Note :
Color may vary subject
to different regions.



Accessories Bag

1



2



3



4



5



6



7



1. Motherboard Stand-offs X 11
2. Motherboard Stand-off Socket 1
3. Hexagon Head Screws X 20
4. 2.5" HDD Screws X 12
5. 3.5" HDD Screws X 4
6. Water-cooling System Washers x 8
7. Cable Ties X 5

■ Case Structure



1. Top Cover

2. Logo (Top Cover)

3. Power Button

4. Handles



■ Case Structure



5. 2.5 Drive Bay

6. 3.5 Drive Bay

7. Top Fan/ Radiator Mounting Area

8. Bottom Fans/ Radiator Mounting Area

9. Motherboard Mounting Area

10. CPU Cooler Installation Cut-Out Hole

11. PCI-E Expansion Slots

12. Power Supply Mounting Area

13. Shock-Proof Stands

14. Grounding Wire

Installation Guide

(Please follow the related chapters to assemble)

1. Opening the Chassis

Please remove the top cover by lifting it upwards.

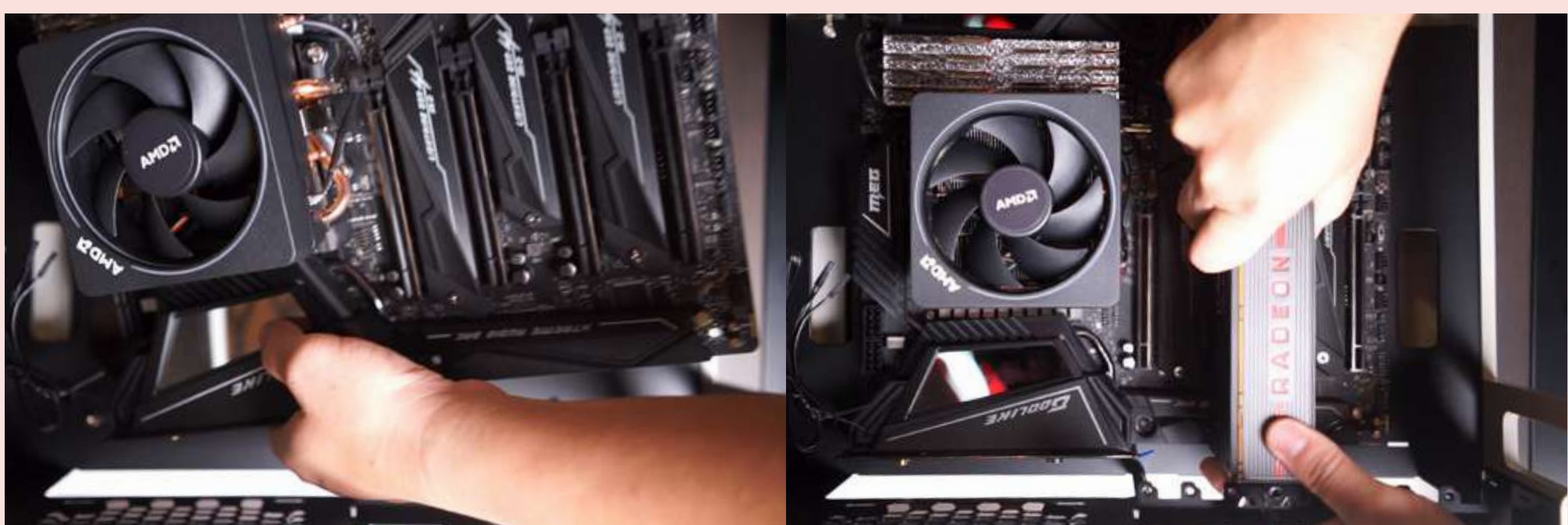


2. Motherboard Installation

Parts Required: Motherboard Stand-Offs, Motherboard Stand-Off Socket, Hexagon Head Screws

3. Expansion Card Installation

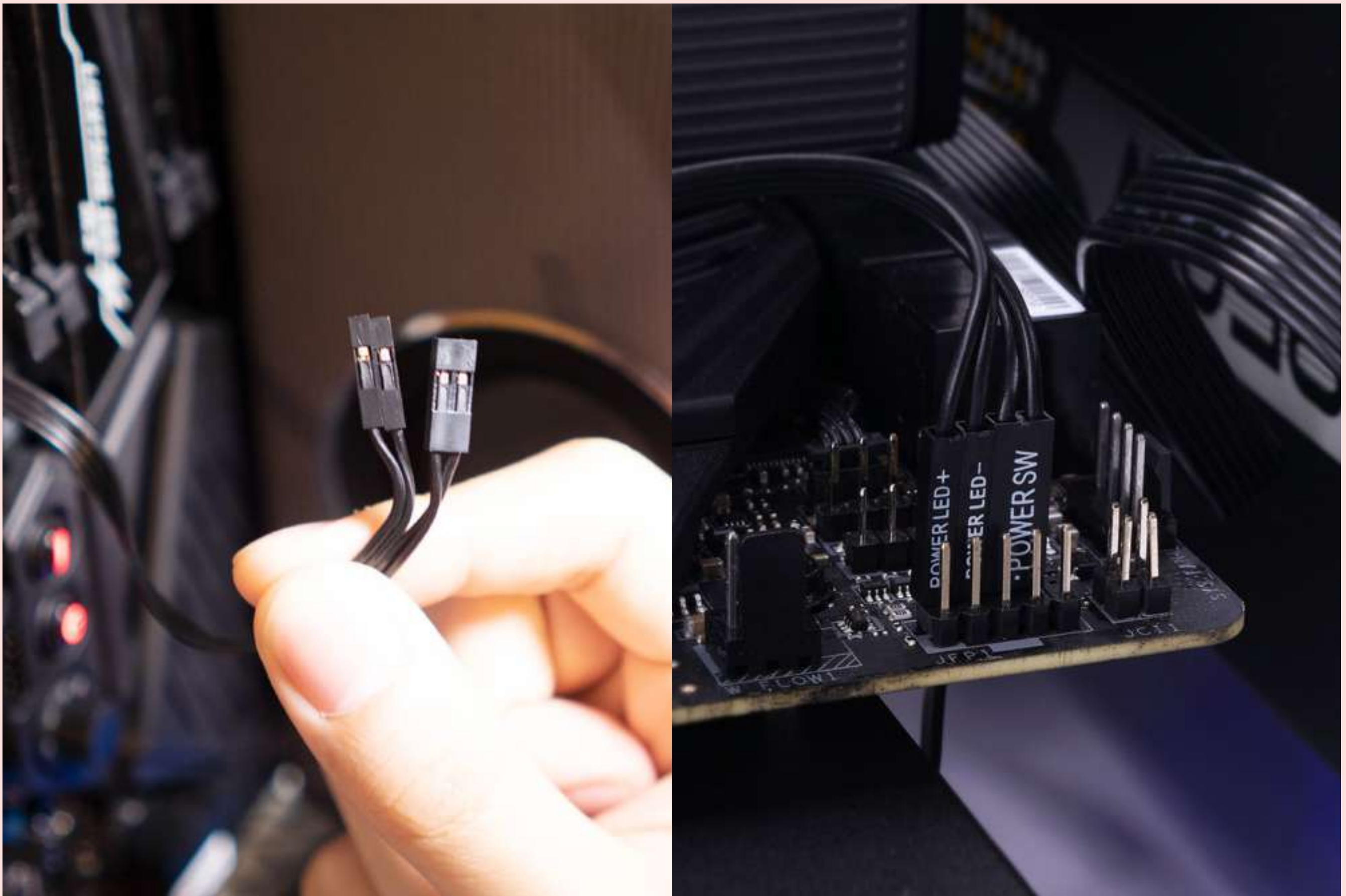
Parts Required: Hexagon Head Screws.



■ Installation Guide

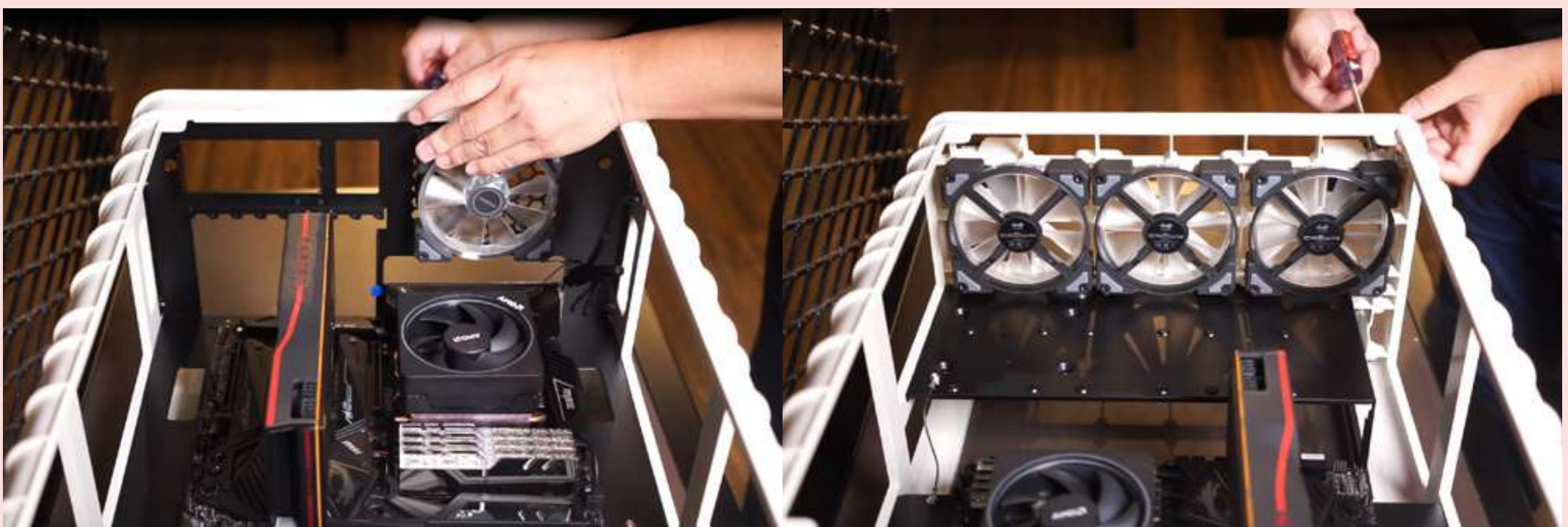
(Please follow the related chapters to assemble)

4. Power Button Installation



5. Fan Radiator Installation

Parts Required: Water-cooling System Washers



6. 2.5"/ 3.5" Drive Bays Installation

6.1 Parts Required: 2.5" HDD Screws

6.2 Parts Required: 3.5" HDD Screws



■ Installation Guide

(Please follow the related chapters to assemble)

7. Power Supply Installation

Parts Required: Hexagon Head Screws

Power supply must be mounted on the bottom right mounting area.

* Please remove the rubber foot stands, install the power supply power chord and then put back the rubber foot stands.



8. Alice Cover Installation

Parts Require: Alice Cover

With the base of the case facing up, put the cover on by aligning the four holes on the bottom of the cover with the pads on the four corners of the case.



■ Installation Guide

(Please follow the related chapters to assemble)

9. Completing Installation

Fully put on the cover and gently install the top cover.

* For more assembly instructions, please scan the QR Code below or watch the video in the website link:
<https://youtu.be/m7YW21VoLXE>



ALICE



Notices and Warranty

Notices

1. Please follow the user manual for installation guidelines.
2. When installing the computer components, please use antistatic precautions to prevent ESD (electrostatic discharge) damage. Failure to take the necessary precautions may result in injury to the installer and/or damage to the machine. Incorrect installation may burnout the motherboard and other system components.
3. To avoid any damages, please do not use this product for any other purpose than its intended use.
4. Any modifications may damage the product.
5. Please remove all internal devices before shipping or moving. (Including power supply, hard drives, motherboard, CPU, etc.)
6. When storing the case, please keep this product away from high temperatures. Keep away from machines such as heaters that might cause high temperatures.
7. In order to keep the cover clean, please avoid anything that will cause the cover to be stained.
8. To avoid any damages, do not stack anything on the top cover and please handle with care.
9. We have made every effort to display as accurately as possible the colors and styles of our products that appear on our websites. With that said, we cannot guarantee that your computer's monitor display of any color or style will be accurate.

Warranty

- * For more detailed warranty information, please visit the InWin retail website at www.in-win.com.
- * The actual product is subject to change without prior notice. In Win Development Inc. reserves the right to make final modifications.



CONTEMPORARY & INNOVATIVE
www.in-win.com