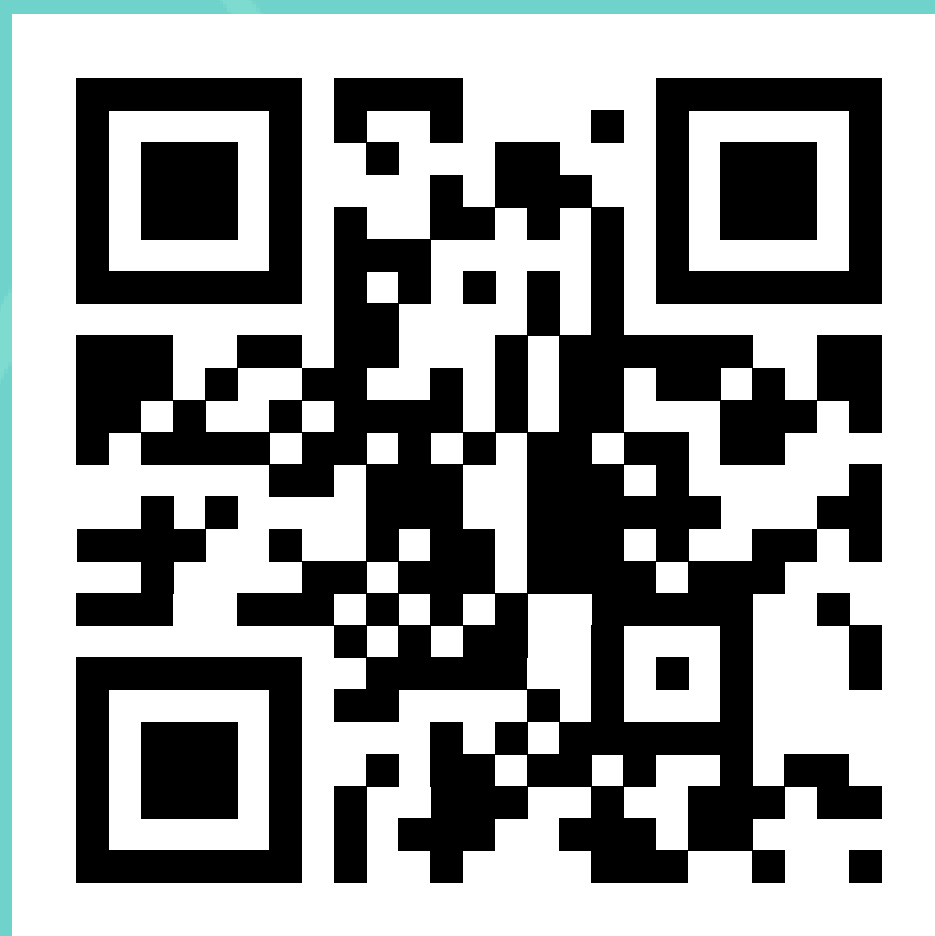


Case Monsters-A: Lab Series User Manual



Product Video Information



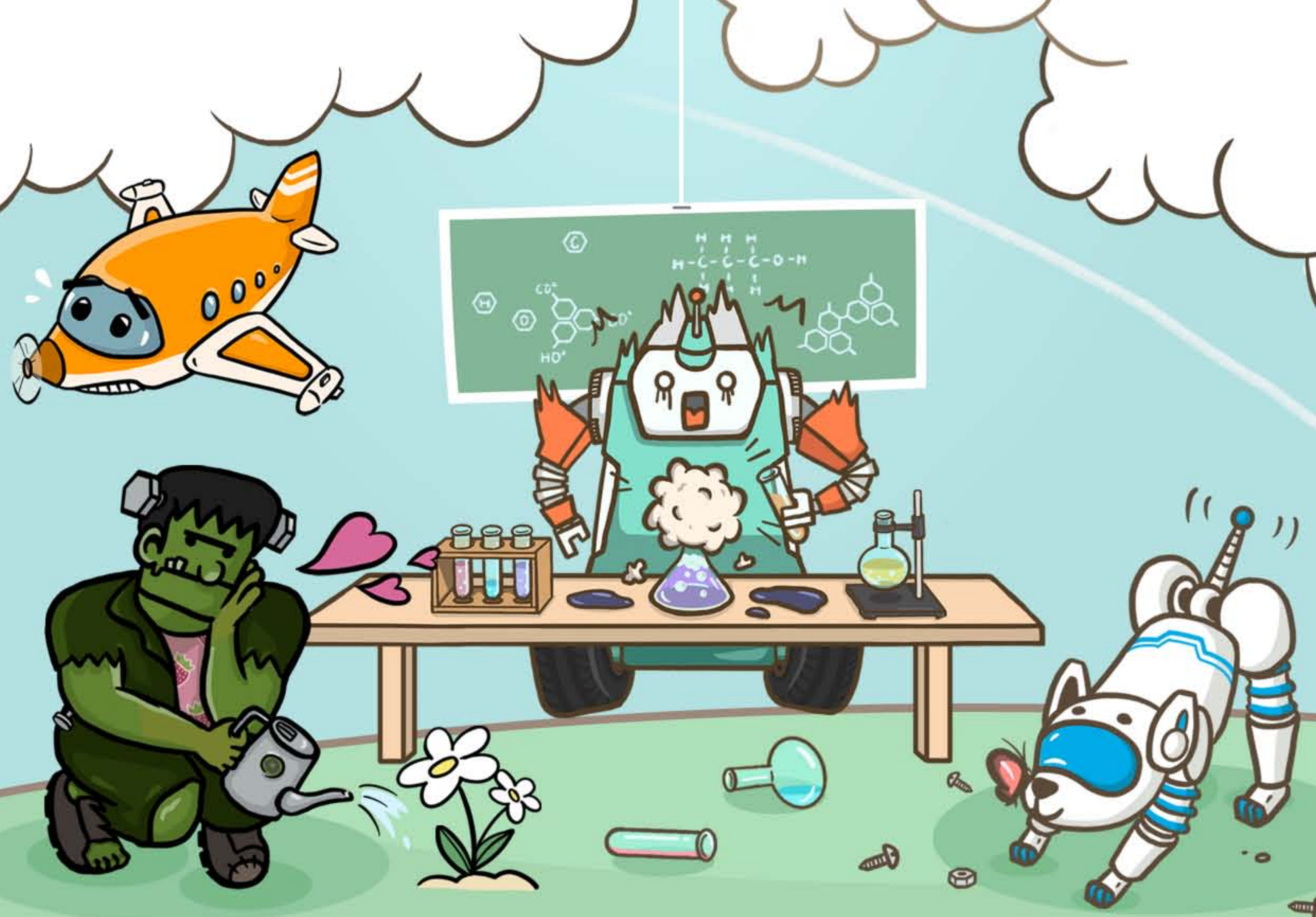
Product Video



Assembly Video

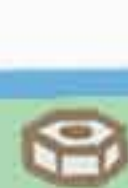
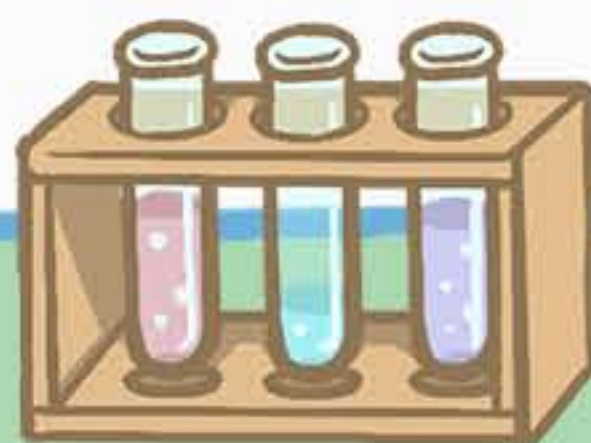


Installation Video



Product Story

Somewhere in the universe and beyond the numbered nebulas, there is a mysterious planet nicknamed, Case Monsters World. The planet emitted a continuous echoing sound. Bippp... Bippp... Bippp... If you follow the sounds, you can reach the source, which is a high-tech building called CML (Case Monsters Lab). The CML is responsible for the creation of four A.I. robots - ROBERT, PLANNIE, FRANK, and AIDO. They were created to develop skills to assist all living creatures. They one day hope to visit the human world to help and become friends with humans.



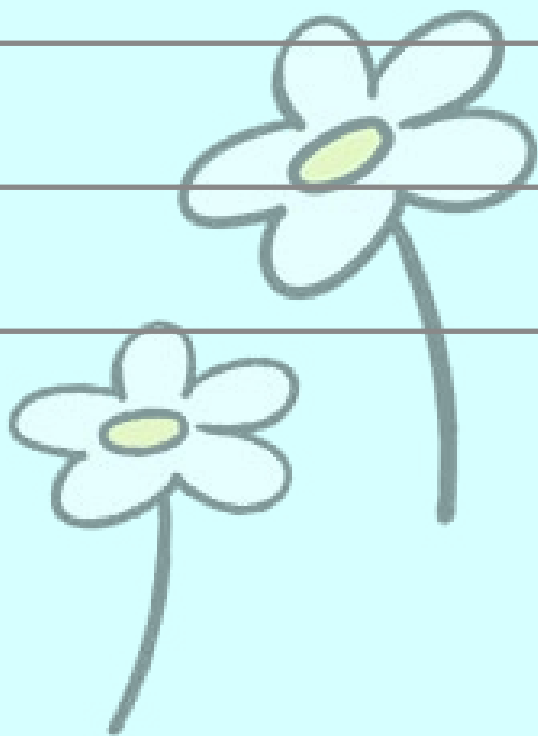


Specifications

InWin Case Monsters-A: Lab Series Chassis

Model	Case Monsters - A: Lab Series
Model Number	IW-CS-CASEMONSTERS-001, IW-CS-CASEMONSTERS-002, IW-CS-CASEMONSTERS-003, IW-CS-CASEMONSTERS-004
Colors	001-ROBERT, 002-PLANNIE, 003-FRANK, 004-AIDO
Case Type	Mid Tower
Materials	Tempered Glass, SECC, ABS
M/B Compatibility	12” x 13” (305 x 330 mm) E-ATX, ATX, Micro-ATX, Mini-ITX
Expansion Slots	8 x PCI-E
Maximum Compatibility	GPU Length: 390mm CPU Heatsink Height: 170mm
I/O Ports	1 x USB 3.2 Gen 2x2 Type-C 2 x USB 3.2 Gen 1 HD Audio
Internal Drive Bays	4 x 2.5" 2 x 3.5"
Thermal Solution Compatibility	Air Cooling Fans: Front: 3 x 120mm Top: 3 x 120mm Rear: 1 x 120mm (4 InWin ASL120 Fans Included) Water Cooling Radiator: Front: 1 x 360mm Top: 1 x 360mm
* Number of fans pre-installed may vary based on different regions.	
Power Supply Compatibility	PSII: ATX12V- Length up to 180mm
Product Dimensions (H x W x D)	537 x 270 x 528mm 21.1 x 10.6 x 20.7”
Package Dimensions (H x W x D)	590 x 550 x 240mm 23.2 x 21.6 x 9.4”
Net Weight	6.9 kg / 15.2 lbs.
Gross Weight	11.2 kg / 24.7 lbs.

* InWin's products comply with RoHS regulations.
* Specifications may vary based on different regions.

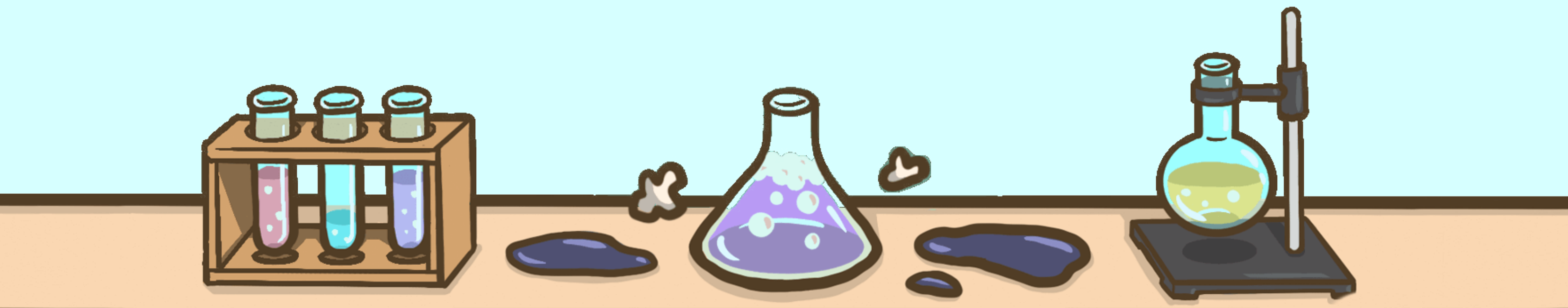


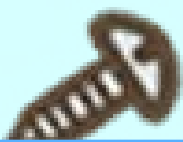
Specifications

InWin Sirius Loop ASL120 Fans

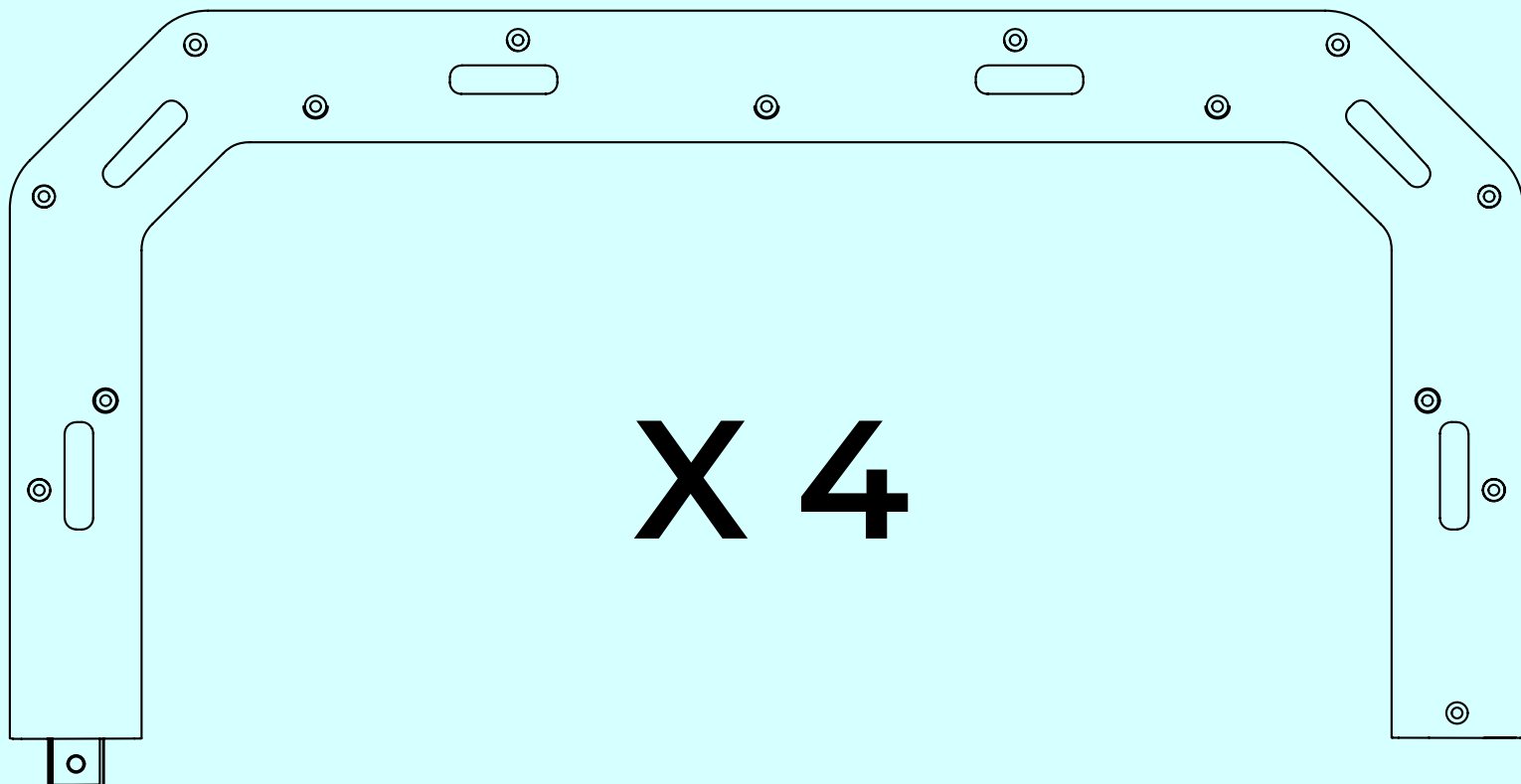
Model	Sirius Loop ASL120	
Quantity Included	Single Pack	Triple Pack
Model Number	IW-FN-ASL120-1PK	IW-FN-ASL120-3PK
Colors	Black	
Fan Size	120 x 120 x 25mm	
Materials	PC, PBT	
Rated Voltage	DC 12V	
Rated Power	3.96W	
Rated Current	0.33A	
ADD RGB Rated Voltage	DC 5V	
ADD RGB Rated Power	1.5W	
ADD RGB Rated Current	0.3A	
Speed Mode	PWM 500-1800 +/-10% RPM	
Air Flow	50 CFM	
Air Pressure	1.67mm/H2O	
LED	Addressable RGB	
Connector (Fan to Fan)	Non-Modular Cables	
Connector to M/B	4-Pin (PWM, 12V), 3-Pin (ARGB, 5V)	
Noise Level	27 dB(A) (Max)	
Bearing Type	Long Lifespan Sleeve Bearing	
Net Weight	200g	600g
Gross Weight	169g	484g
Package Dimensions (L x W x H)	185 x 125 x 30mm 7.3 x 4.9 x 1.2”	185 x 125 x 82mm 7.3 x 4.9 x 3.2”
Warranty	2 Years	

* InWin's products comply with RoHS regulation.
* Specifications may vary based on different regions.

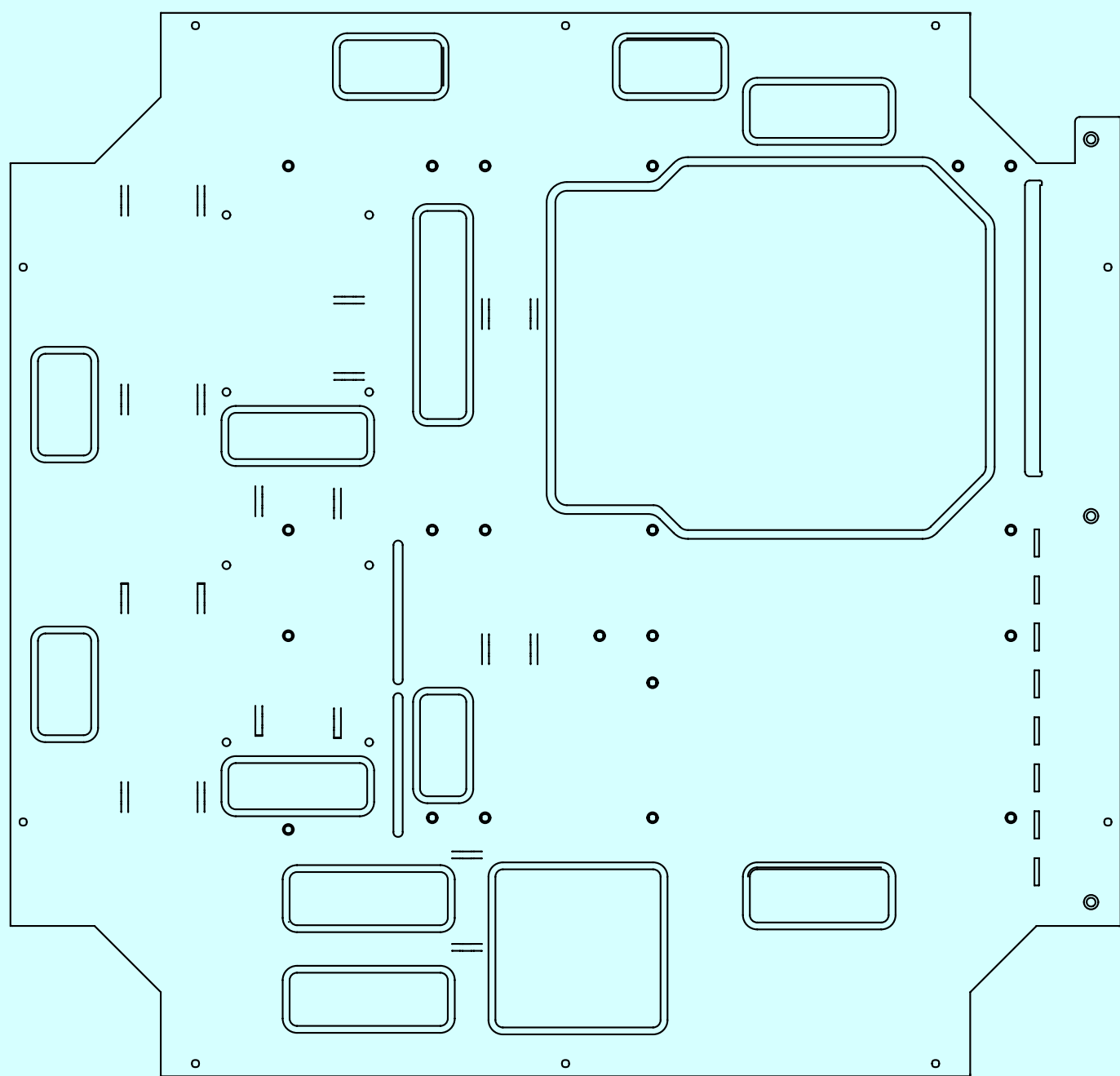
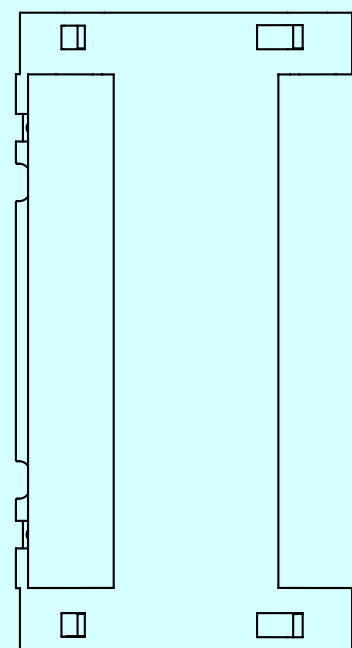
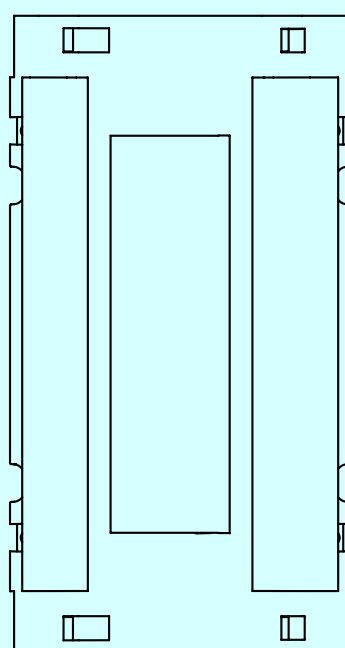
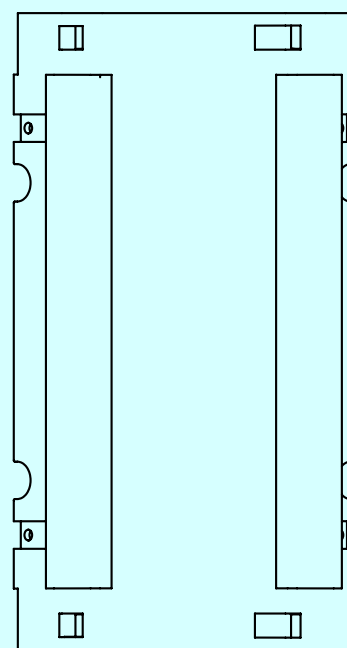




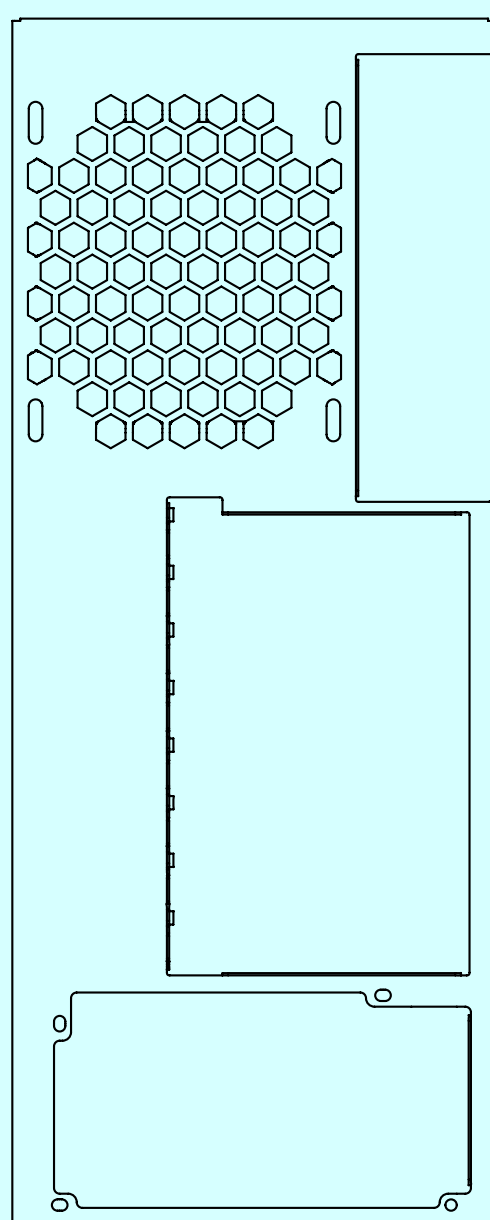
Package Contents



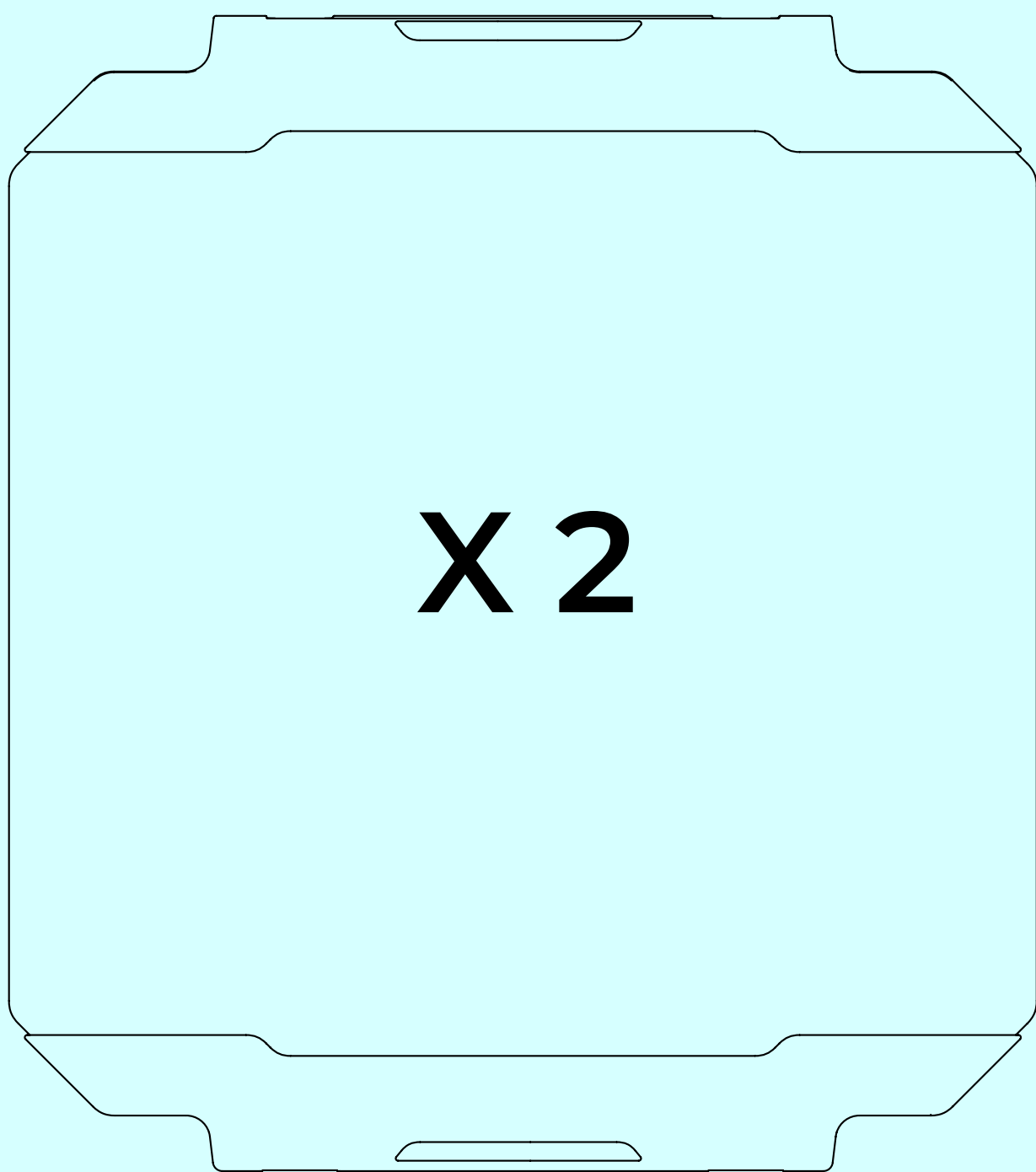
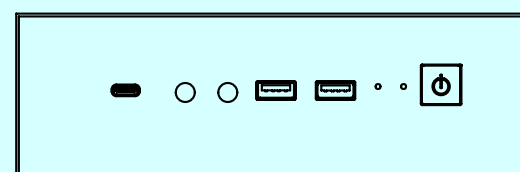
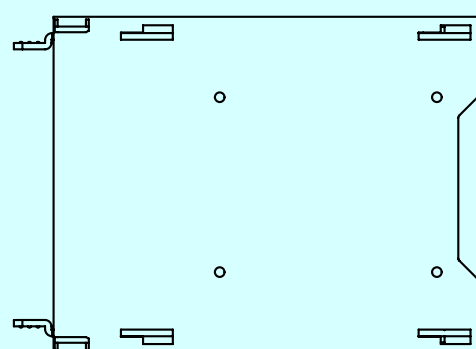
X 4



X 3

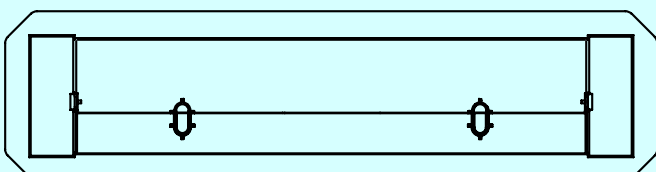


X 2



X 2

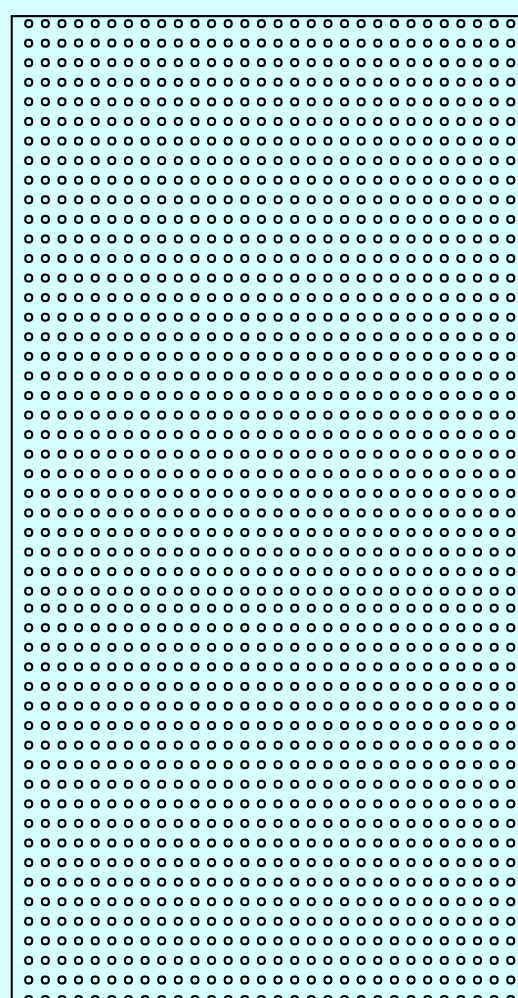
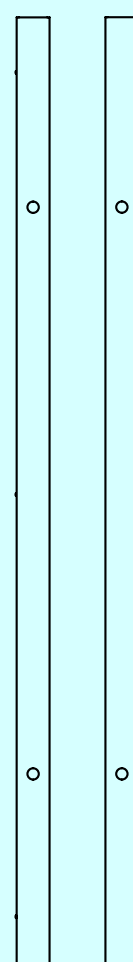
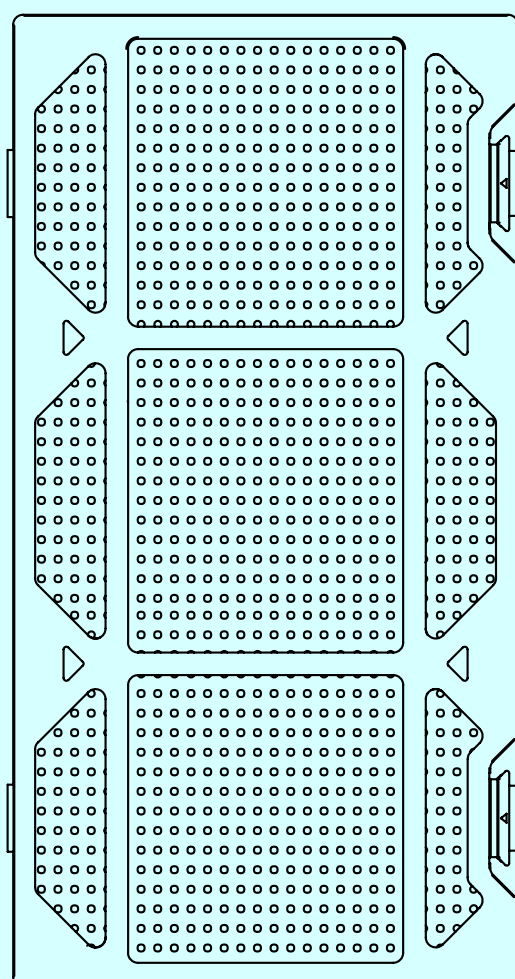
X 2



TYPE 1

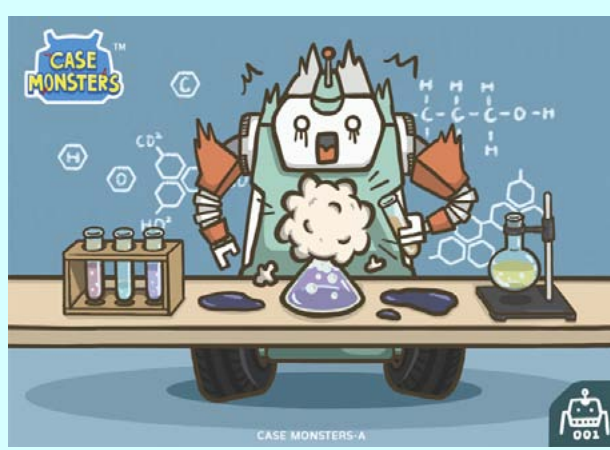
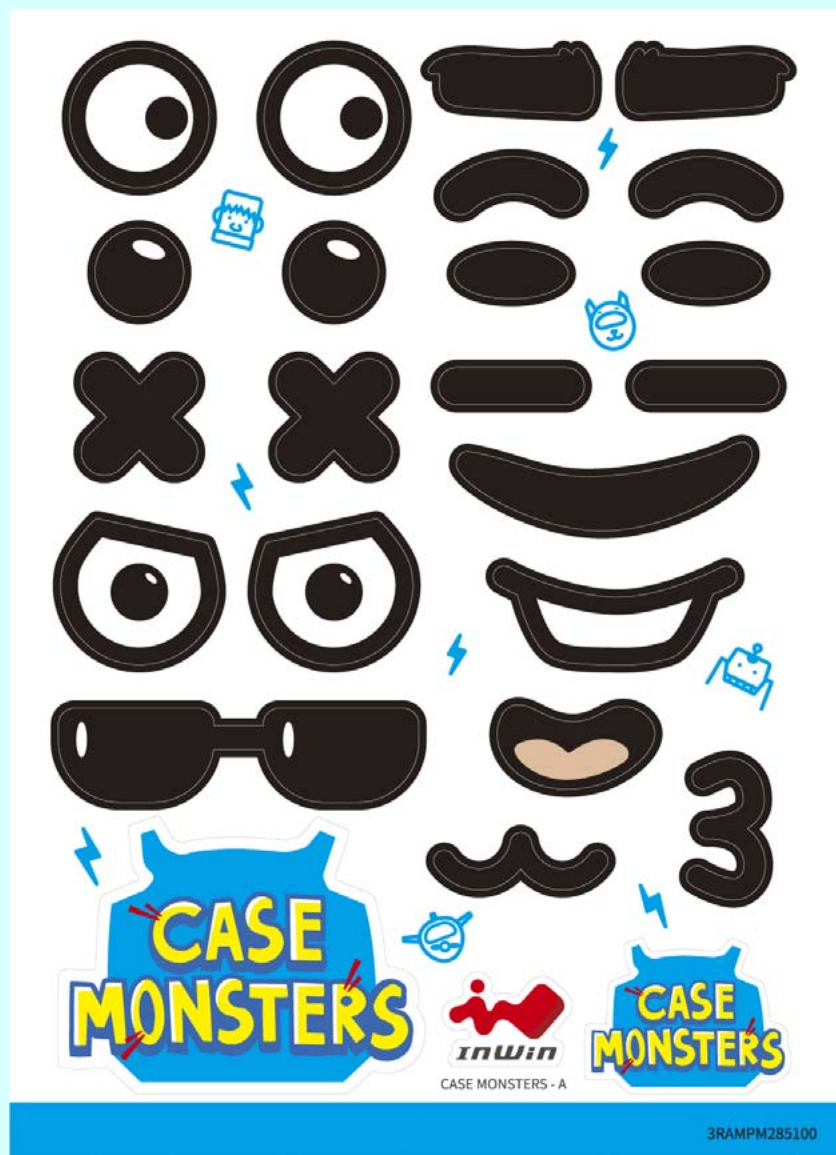
/

TYPE 2





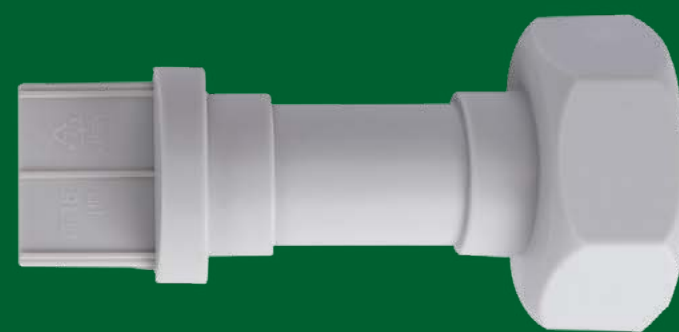
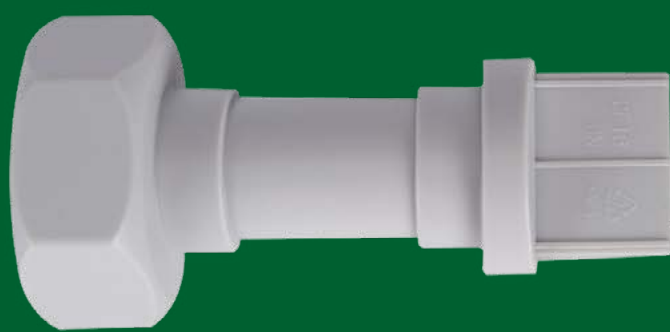
Package Contents



AIDO



FRANK



ROBERT



PLANNIE





Accessories Bag

a. S-1 Screws



x 50

f. 2.5" HDD Screws



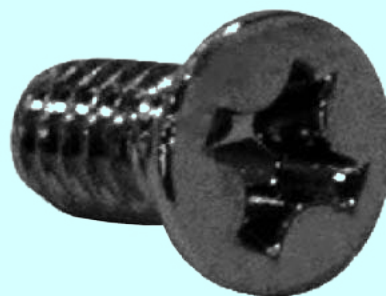
x 16

b. S-2 Screws



x 5

g. 3.5" HDD Screws



x 8

c. Hexagon Head Screws



x 26

h. Cable Ties

x 10



d. Motherboard Stand-offs



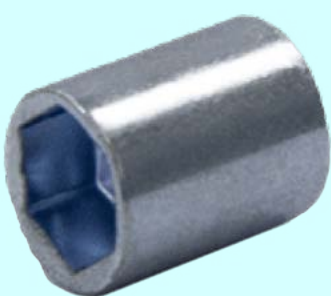
x 15

i. Graphic Cards Holder

x 1



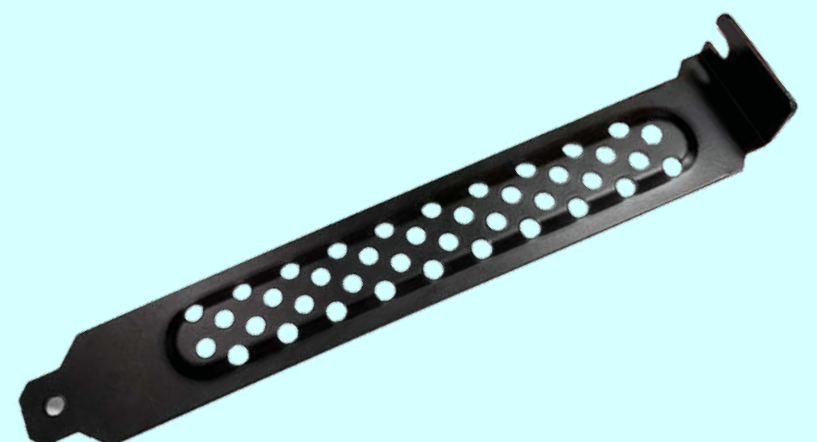
e. Motherboard Stand-off Socket



x 1

j. PCI-E Slot Brackets

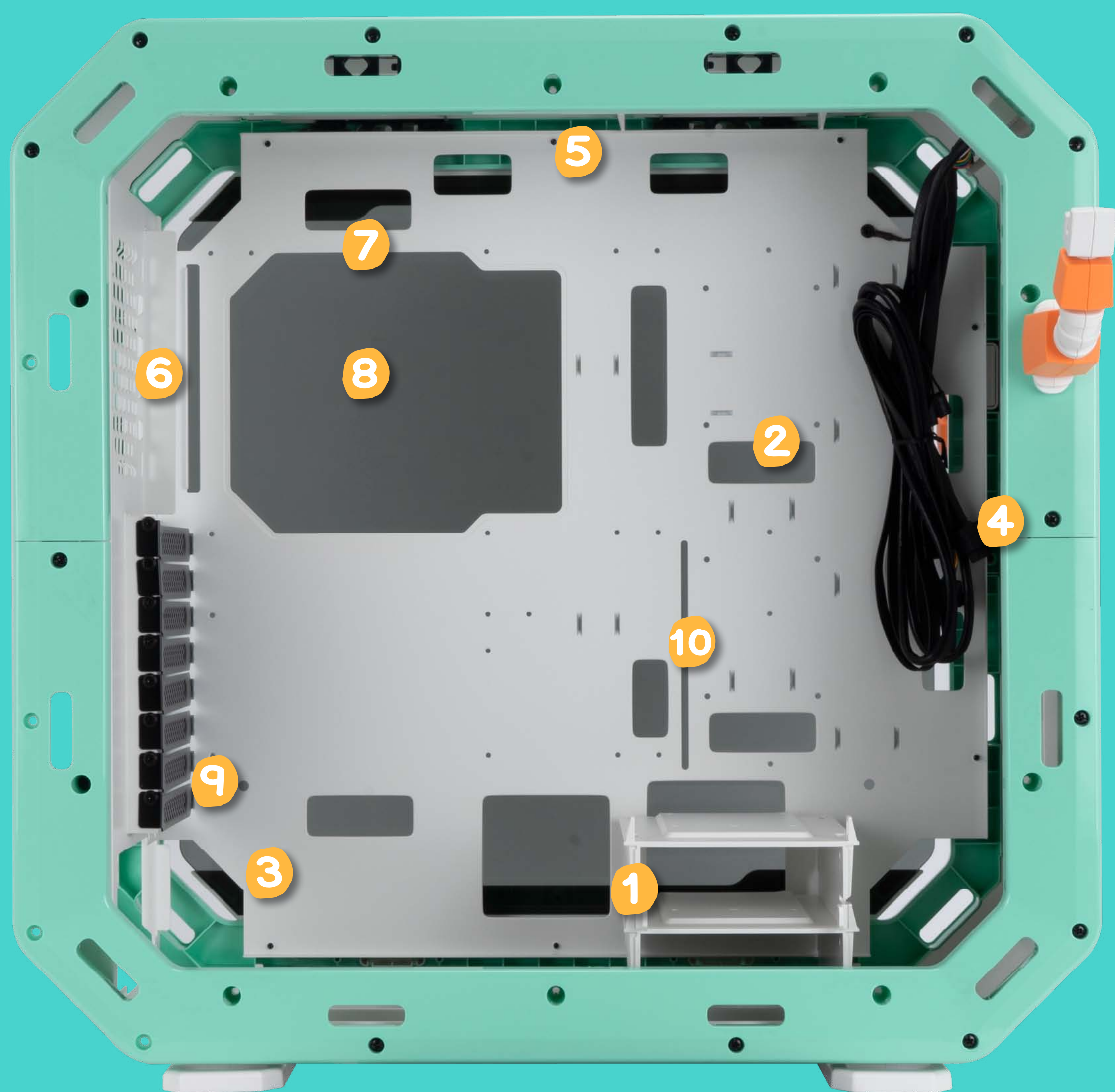
x 8



Case Structure



Case Structure



1	2.5"/3.5" HDD Quick Release Drive Bay
2	2.5" SSD Mounting Area
3	Power Supply Mounting Area
4	Front Fans/Radiator Mounting Area
5	Top Fans/Radiator Mounting Area
6	Rear Fan Mounting Area
7	Motherboard Mounting Area
8	CPU Cooler Installation Cut-Out Hole
9	PCI-E Expansion Slots
10	Graphic Cards Holder Mounting Area

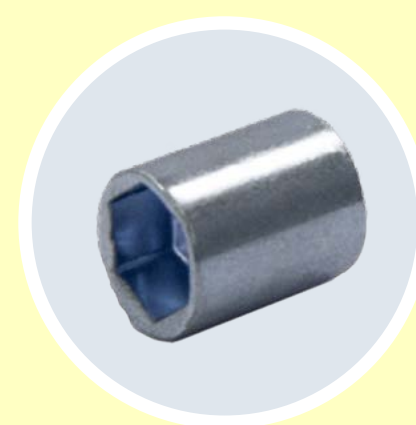
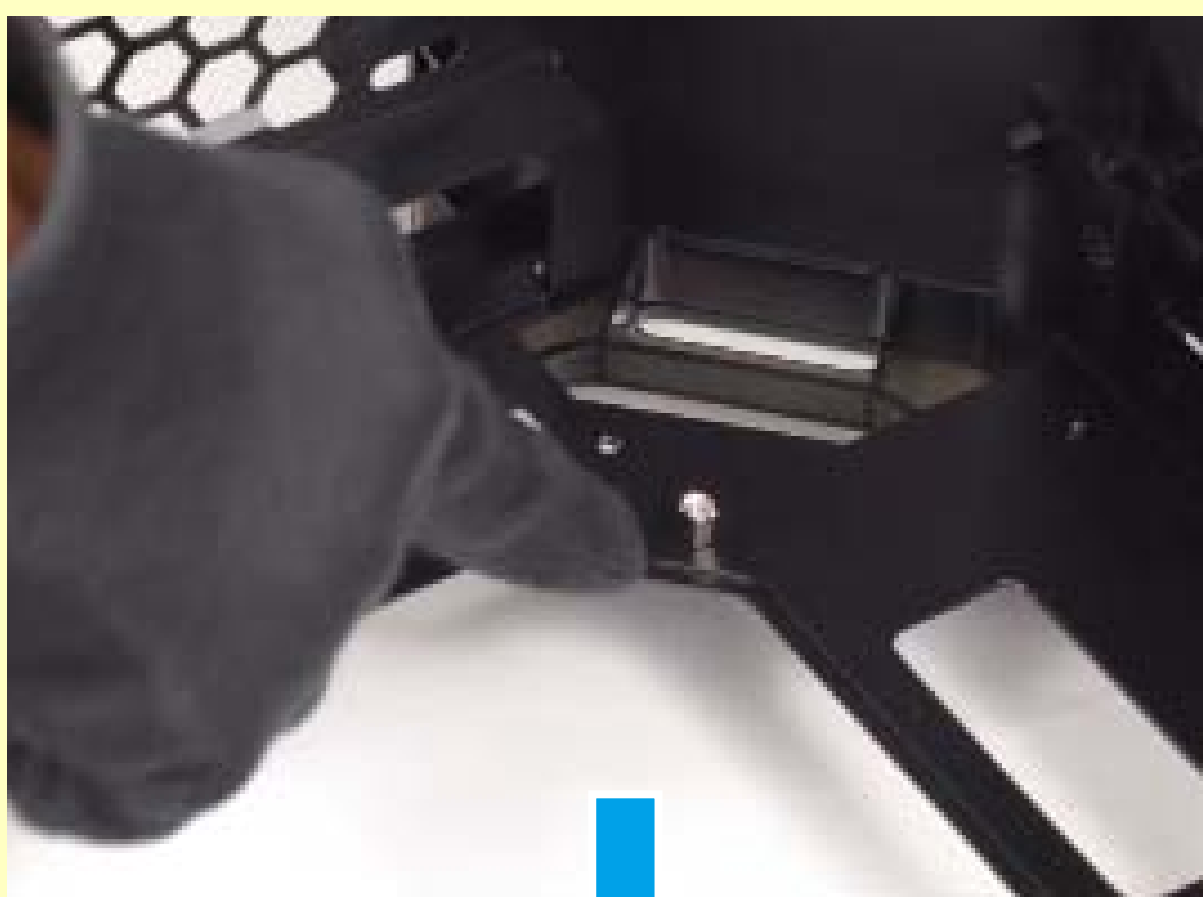
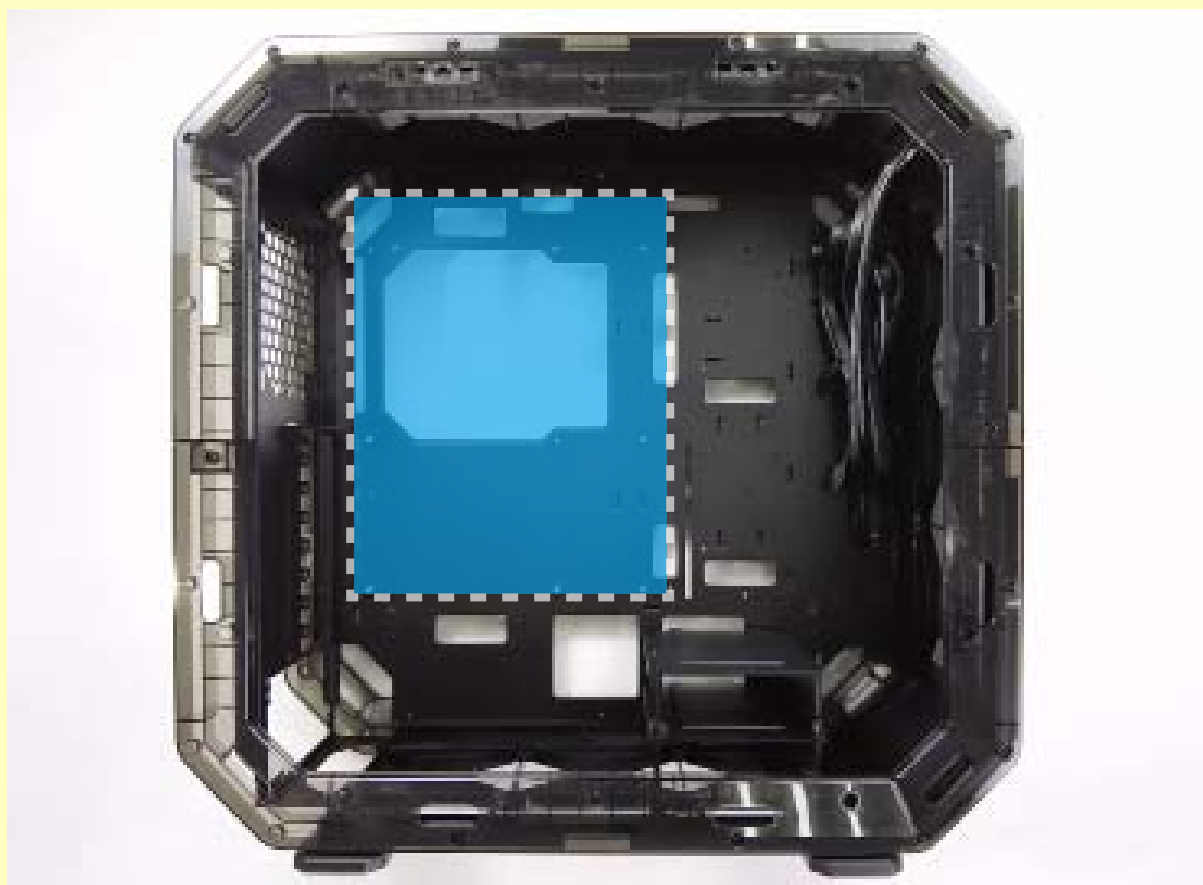
Installation Guide

- * Please follow the related chapters to assemble.
- * Please only use original provided accessories to avoid damage to the product.

1 Opening the Chassis



2 Motherboard Installation



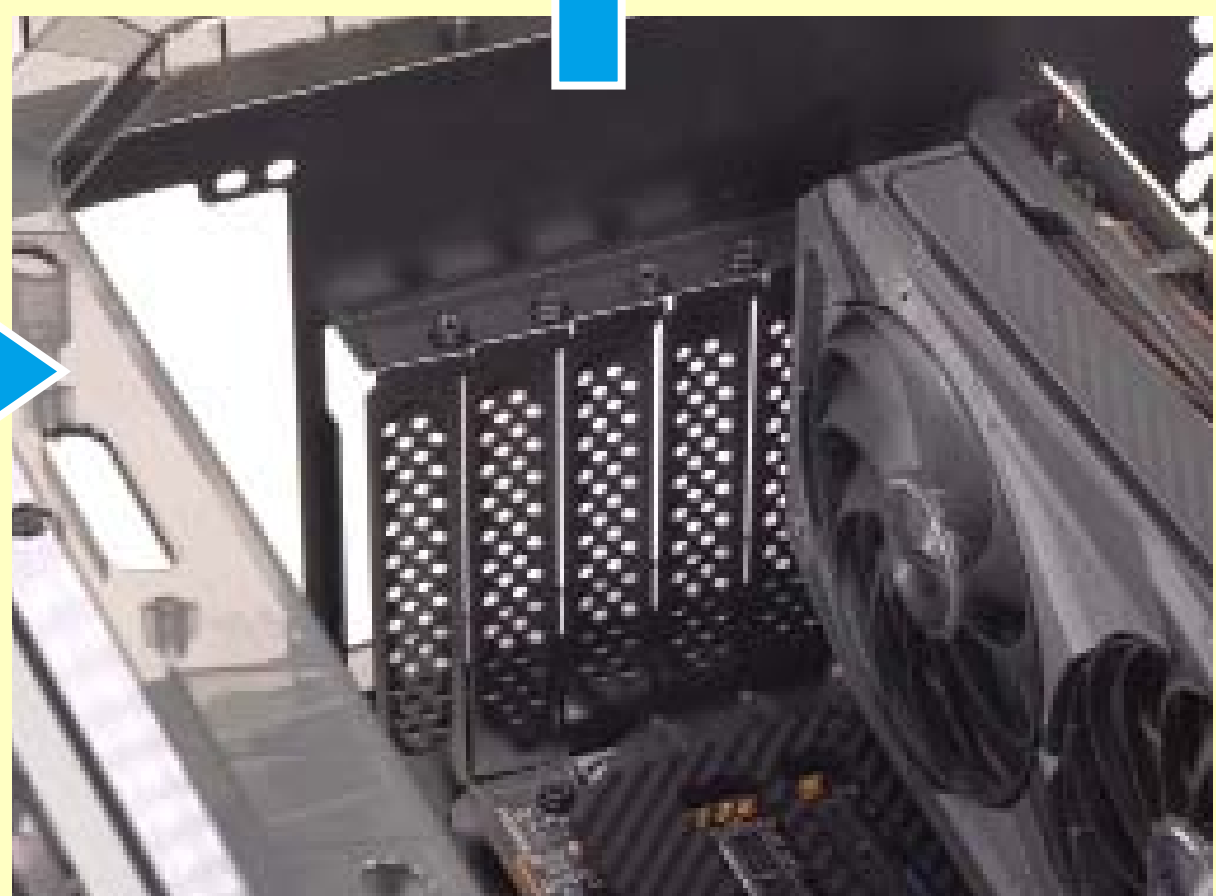
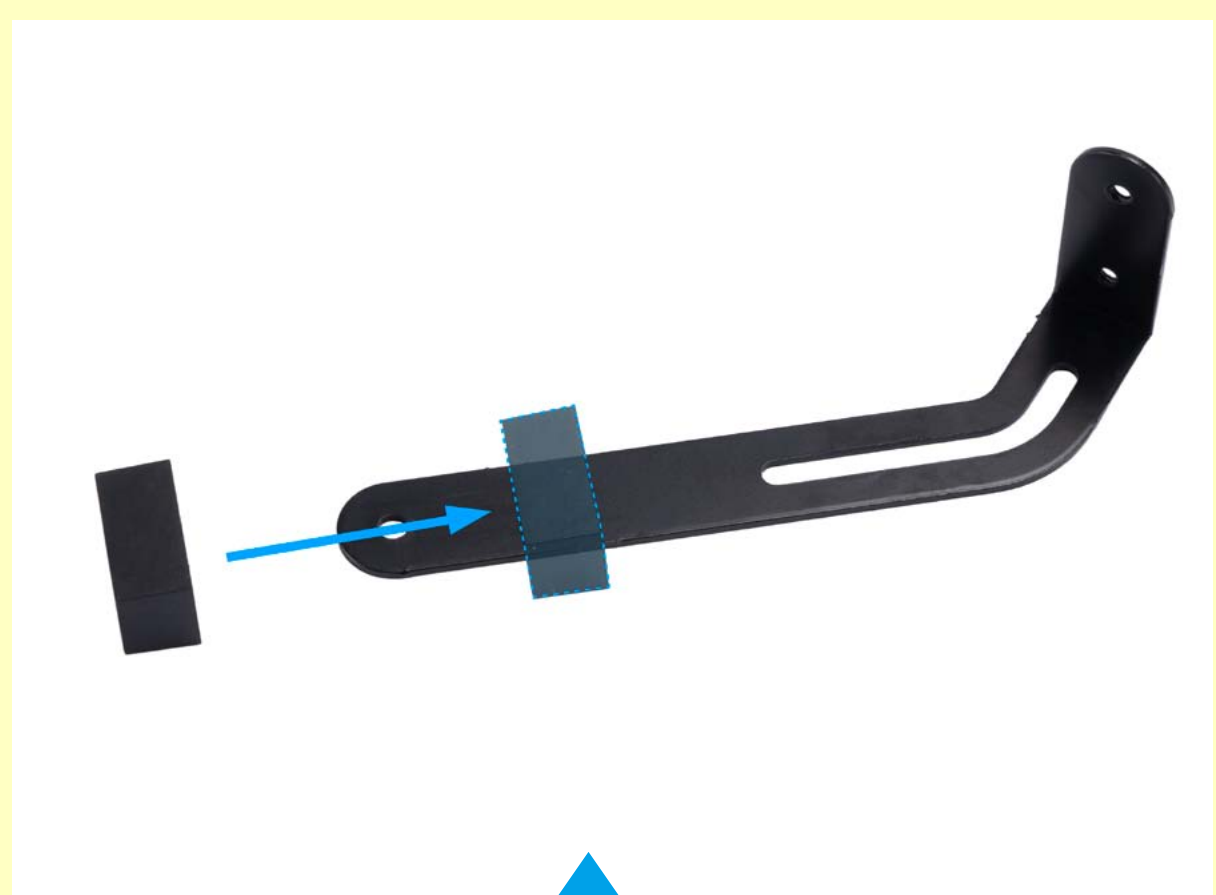
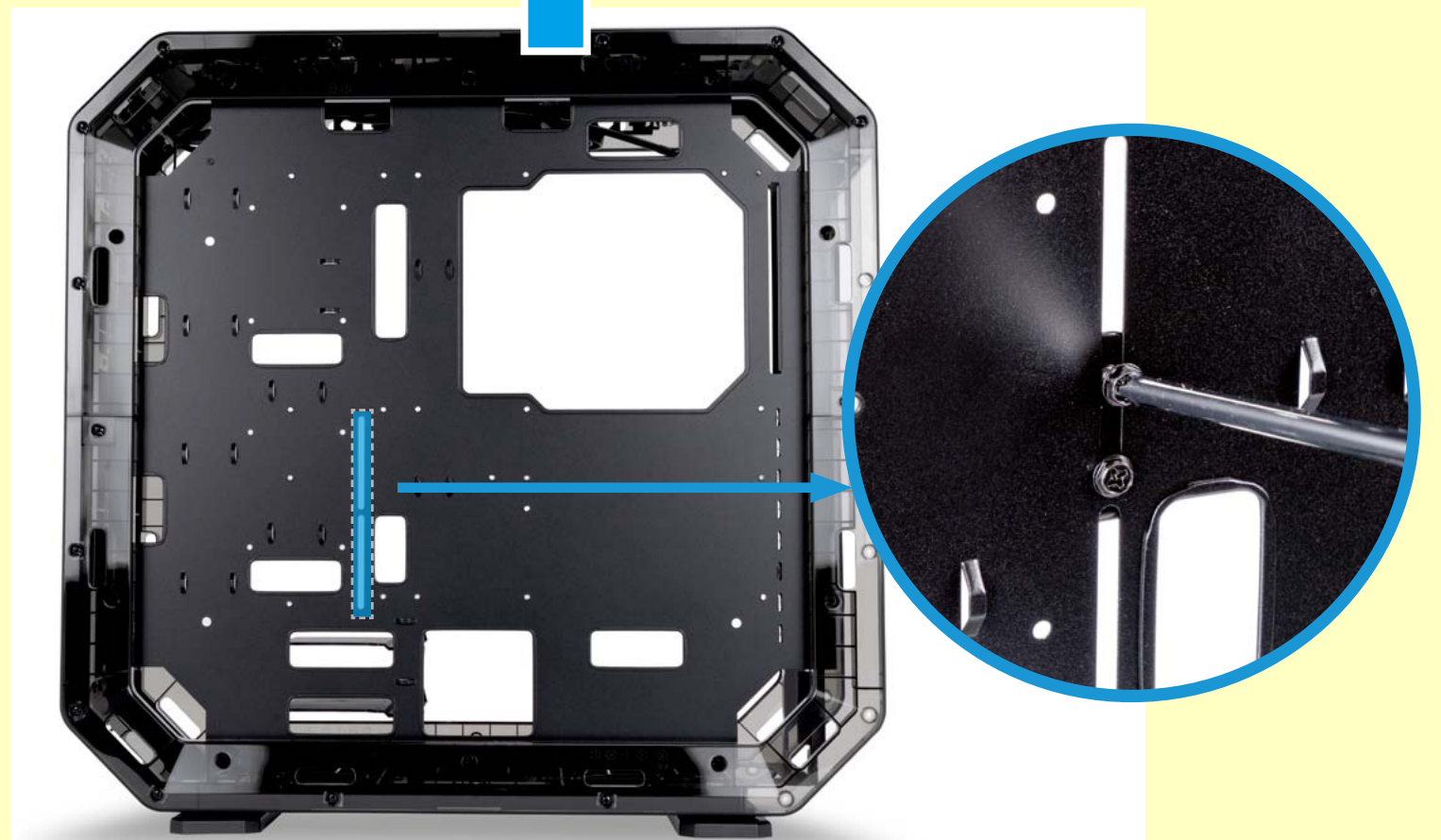
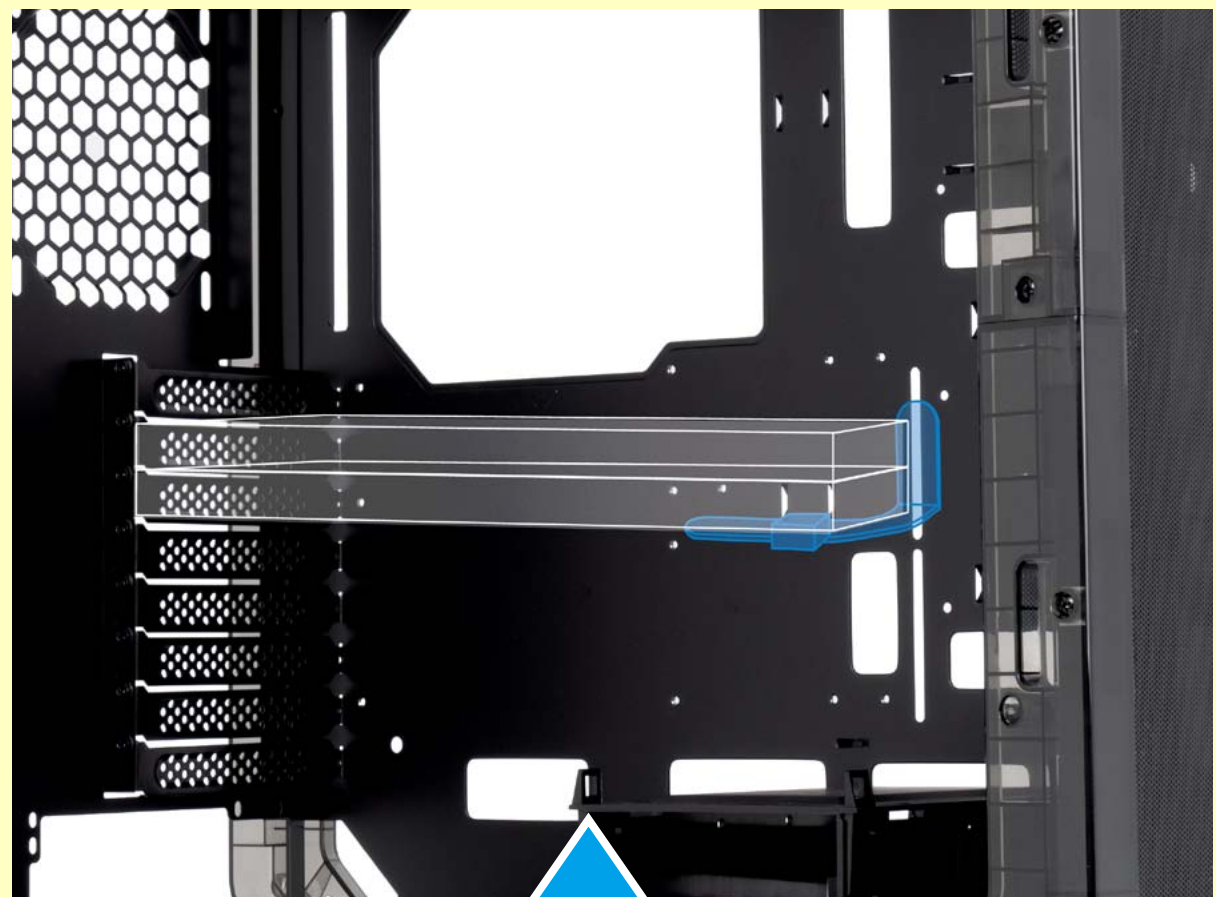
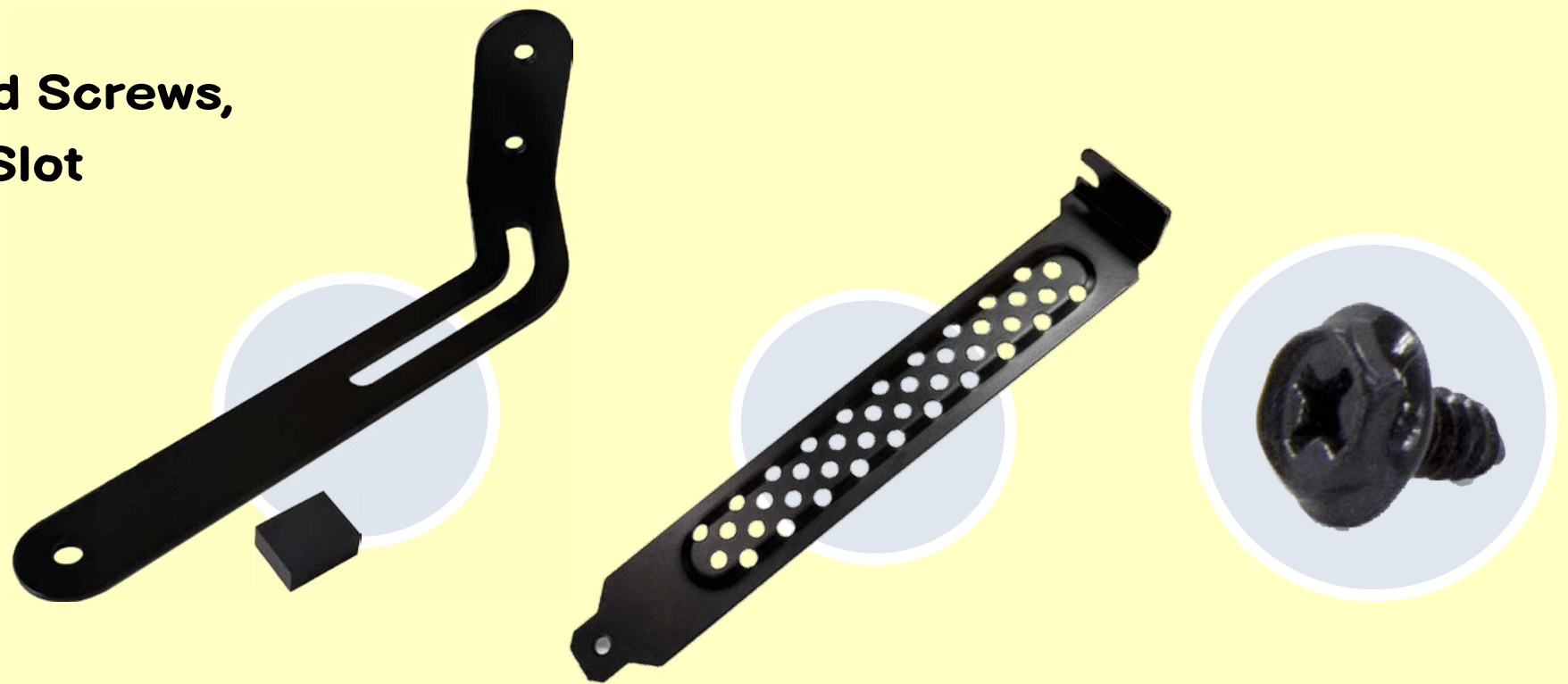
Parts Required:
Motherboard Stand-Offs,
Motherboard Stand-Off Socket
Hexagon Head Screws



Installation Guide

3 Expansion Card Installation

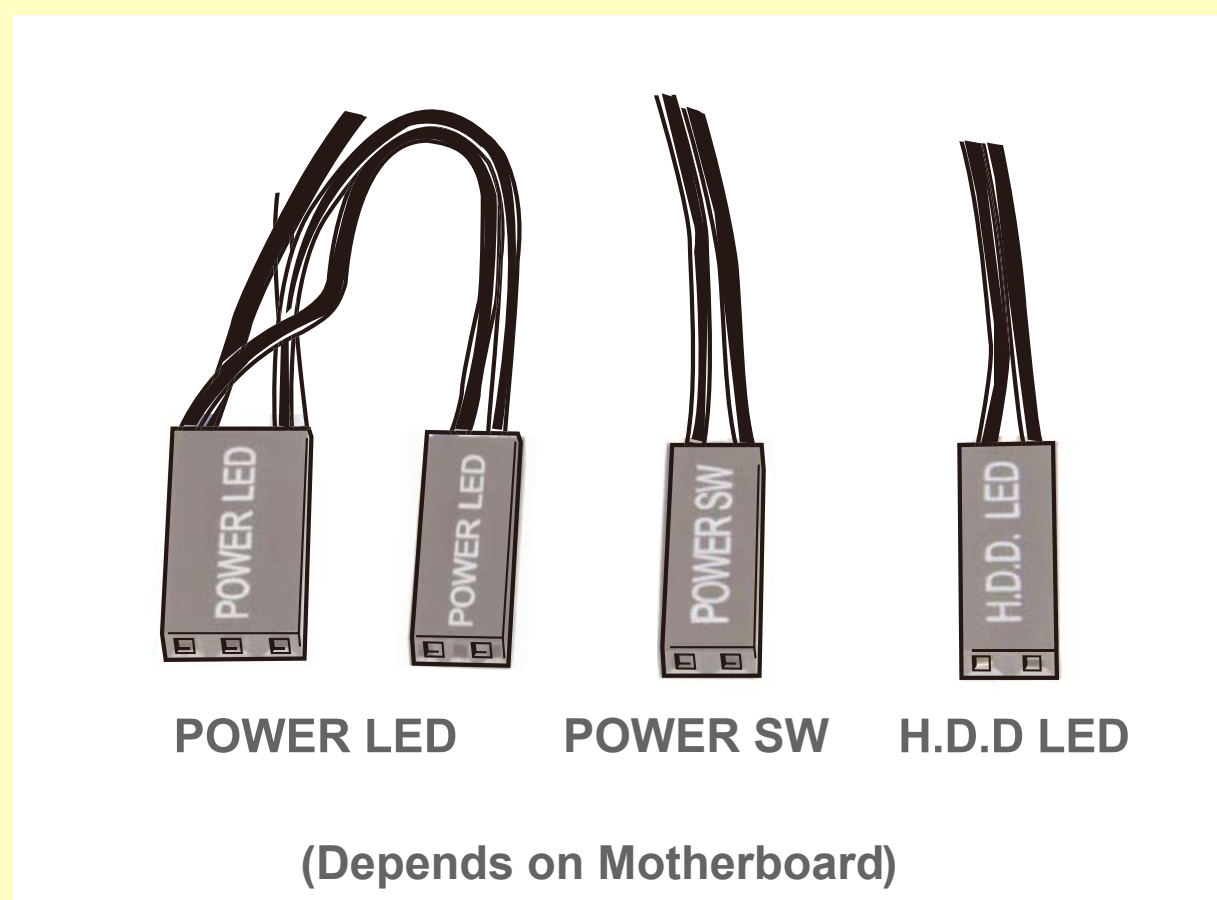
Parts Required: Hexagon Head Screws, Graphics Card Holder, PCI-E Slot Brackets



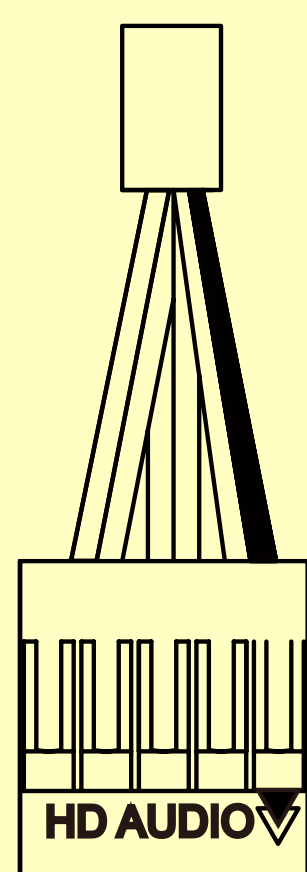
Installation Guide


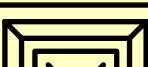





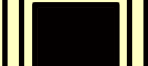


4 Connection Cables

I/O Wires

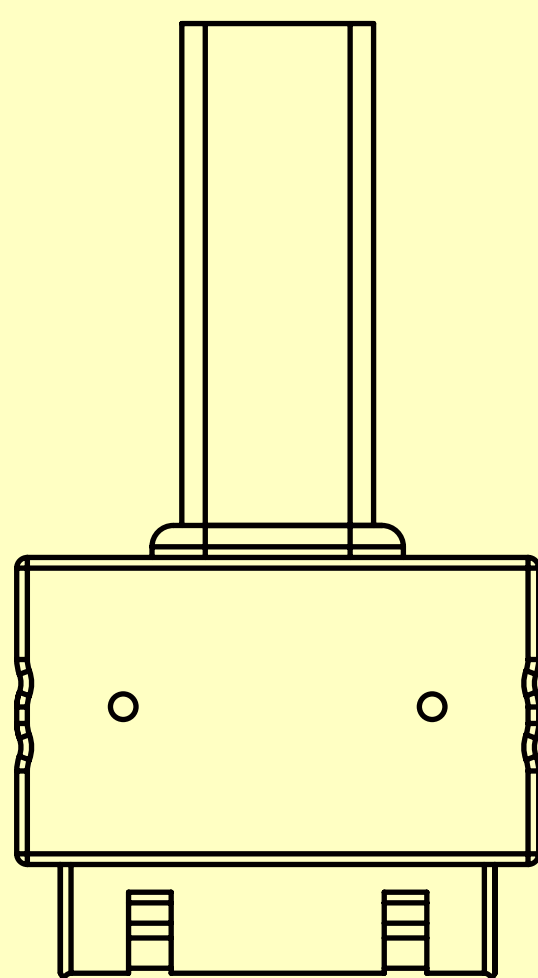


HD Audio Header



PORT2_L	BLUE	10			9	BROWN	SENSE2_R
SENSE_SEND	PURPLE	8			7		KEY
PORT2_R	YELLOW	6			5	WHITE	SNAS1_R
PORT1_R	RED	4			3	ORANGE	PRESENCE#
PORT1_L	GREEN	2			1	BLACK	GND

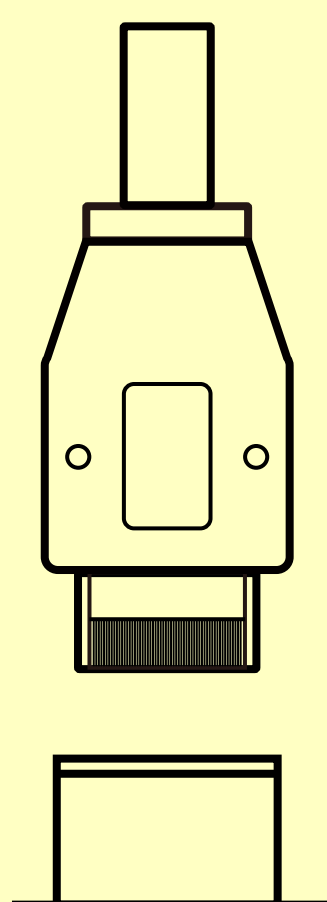
USB3.2 Gen 1 Header



Pinout Table:

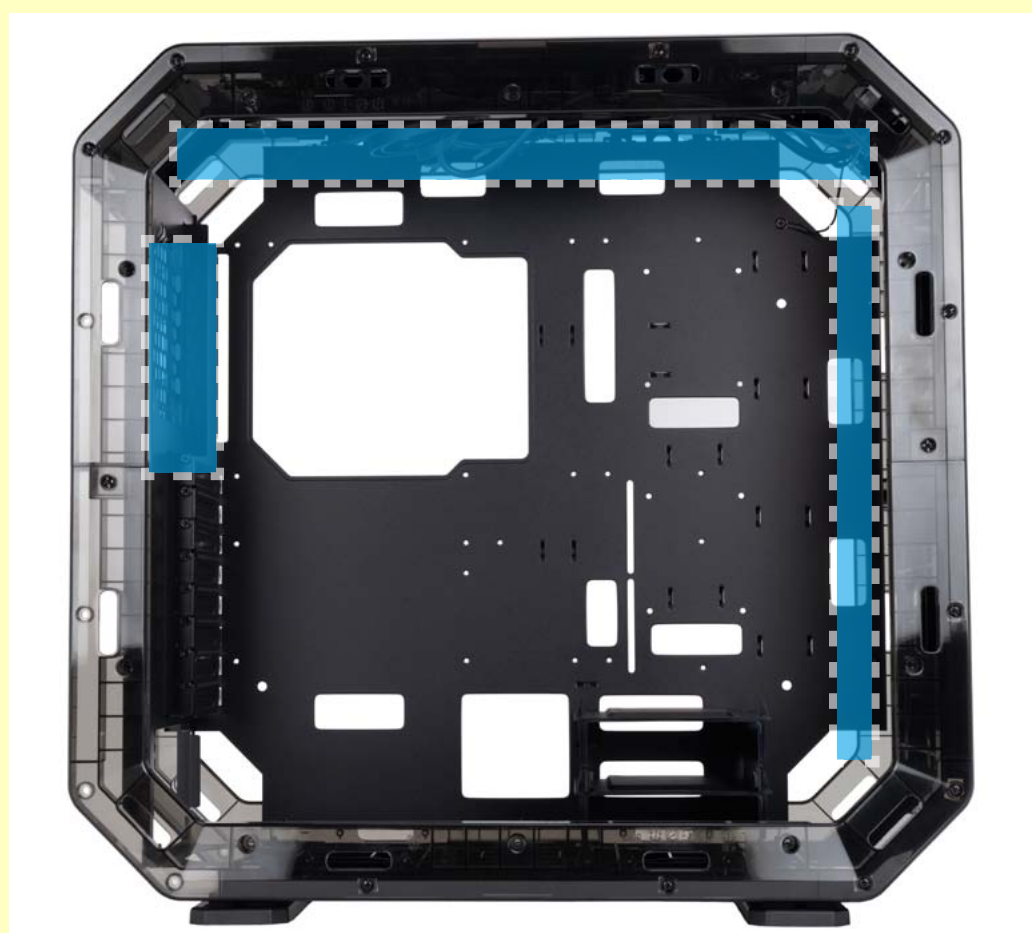
Pin Number	Signal Name
1	Vbus
2	IntA_P1_SSRX-
3	IntA_P2_SSRX+
4	GND
5	IntA_P1_SSTX-
6	IntA_P1_SSTX+
7	GND
8	IntA_P1_D-
9	IntA_P1_D+
10	ID USB OC-
11	IntA_P2_D+
12	IntA_P2_D-
13	GND
14	IntA_P2_SSTX+
15	IntA_P2_SSTX-
16	GND
17	IntA_P2_SSRX+
18	IntA_P2_SSRX-
19	Vbus

USB3.2 Gen 2x2 Type-C Header



Installation Guide

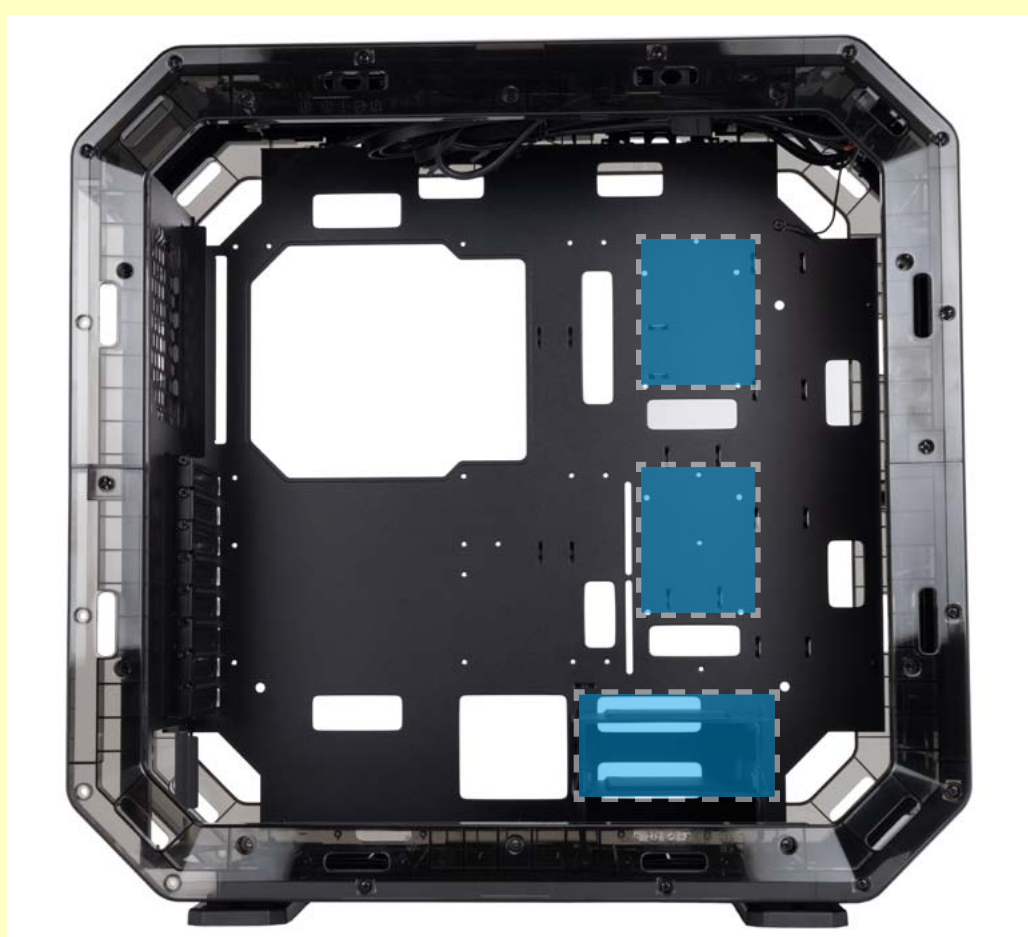
5 Fan / Liquid Cooling Radiator Installation



Parts Required:
Included Sirius Loop ASL120

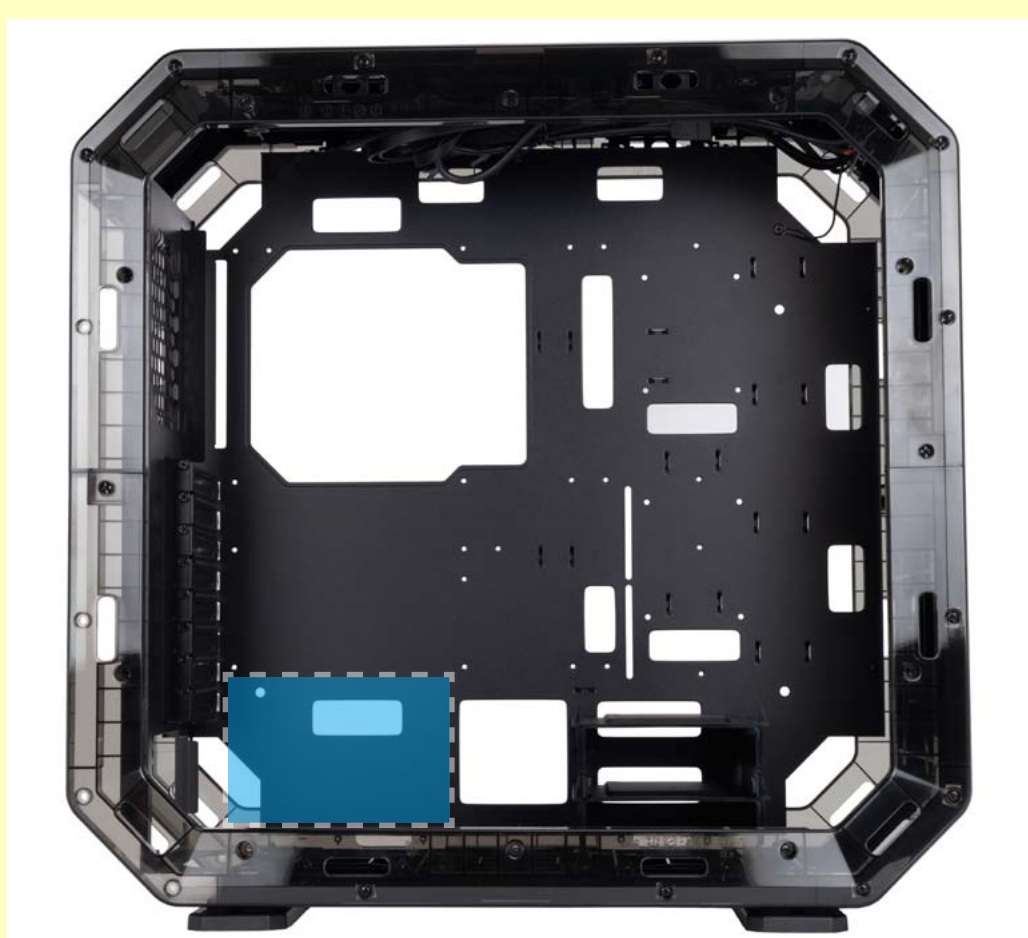
Fan Installation Instructions: https://youtu.be/_S_LLcqe0KI

6 2.5" / 3.5" Drive Bays Installation



Parts Required: 2.5" / 3.5" HDD Screws

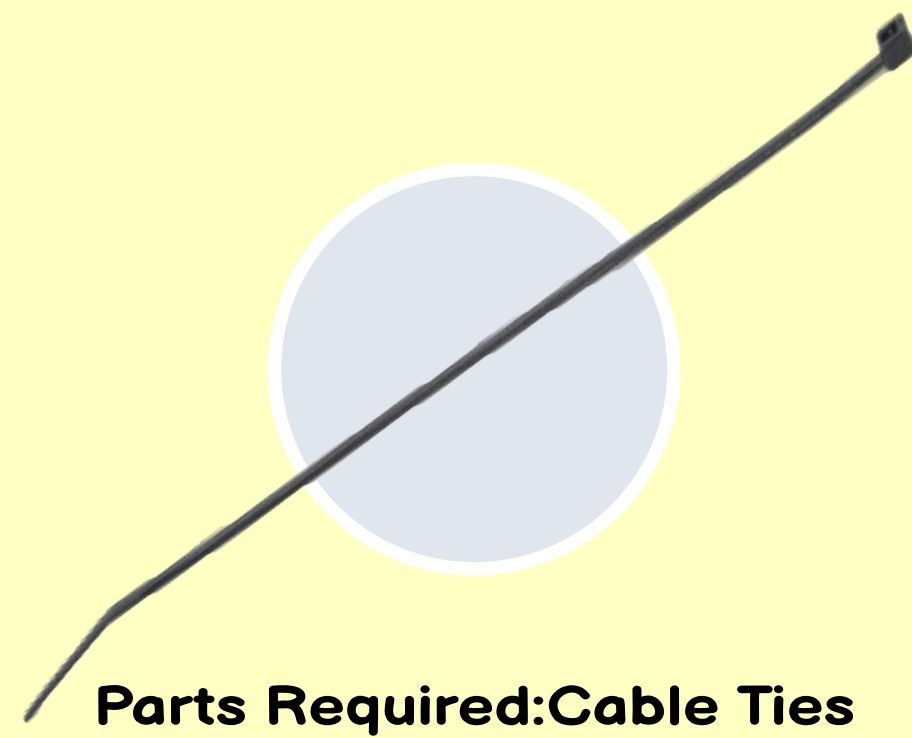
7 Power Supply Installation



Parts Required: Hexagon Head Screws

Installation Guide

8 Installation Complete



Parts Required: Cable Ties



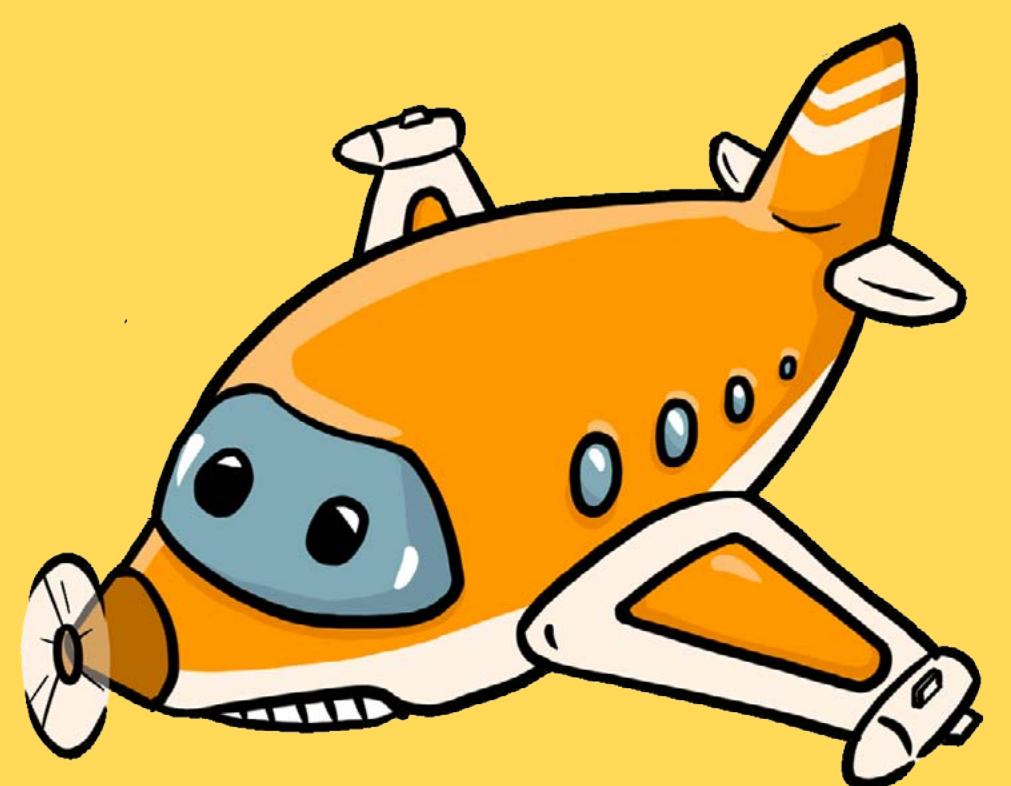
Notices and Warranty

■ Notices

1. Please follow the user manual for installation guidelines.
2. When installing the computer components, please use antistatic precautions to prevent ESD (electrostatic discharge) damage. Failure to take the necessary precautions may result in injury to the installer and/or damage to the machine. Incorrect installation may burnout the motherboard and other system components.
3. To avoid any damages, please do not use this product for any other purpose than its intended use.
4. Any modifications may damage the product.
5. Please remove all internal devices before shipping or moving. (Including power supply, hard drives, motherboard, CPU, etc.)
6. When storing the case, please keep this product away from high temperatures. Keep away from machines such as heaters that might cause high temperatures.

■ Warranty

1. For more detailed warranty information, please visit the InWin retail website at www.in-win.com.
2. The actual product is subject to change without prior notice.
In Win Development Inc. reserves the right to make final modifications.





CONTEMPORARY & INNOVATIVE
www.in-win.com

